

## IR-4 Environmental Horticulture Program Research Report Cover Sheet

**Researcher(s):** Christian Nansen

**Trial:** 2022 CA

**Affiliation:** University of California, Davis  
Department of Entomology and Nematol  
One Shields Ave  
Davis CA 95616

**PhoneNumber:** 530-752-2728

**Email:** chrnansen@ucdavis.edu

**ProjectTitle:** Mealybug Efficacy

**Protocol #:** 22-005

PR#	Research Target	Crop/Plant	Product	EPA Reg. #	Production Site	Status
29844	Citrus Mealybug <i>Planococcus citri</i>	Common Coleus <i>Plectranthus scutellarioide</i>	Distance <i>Pyriproxyfen</i>	59639-96 Valent USA	Greenhouse	C
34406	Citrus Mealybug <i>Planococcus citri</i>	Common Coleus <i>Plectranthus scutellarioide</i>	ISM-555 <i>ISM-555, A21377X</i>	- Syngenta Crop	Greenhouse	C
34407	Citrus Mealybug <i>Planococcus citri</i>	Common Coleus <i>Plectranthus scutellarioide</i>	MBI 203 SC2 <i>MBI 203</i>	- Marrone Bio In	Greenhouse	C
34408	Citrus Mealybug <i>Planococcus citri</i>	Common Coleus <i>Plectranthus scutellarioide</i>	MBI 306 <i>Burkholderia rinojensis strai</i>	- Marrone Bio In	Greenhouse	C
34409	Citrus Mealybug <i>Planococcus citri</i>	Common Coleus <i>Plectranthus scutellarioide</i>	SP3014 <i>SP3014</i>	- SePRO Corpor	Greenhouse	C
35069	Citrus Mealybug <i>Planococcus citri</i>	Common Coleus <i>Plectranthus scutellarioide</i>	TetraCURB Max <i>castor oil + rosemary oil + cl</i>	- Kemin Crop Te	Greenhouse	C
34410	Citrus Mealybug <i>Planococcus citri</i>	Common Coleus <i>Plectranthus scutellarioide</i>	V-10433 <i>V-10433</i>	- Valent USA	Greenhouse	C

**Researcher:** Nansen**Date:** 12/5/22**Project Title:** Efficacy of Management Tools for Mealybug**Protocol #:** S22-005**PRnumbers:** 34406, 34407, 34408, 34409, 35069,  
34410, 29844

### Narrative Summary (Results/Discussion)

The citrus mealybug, *Planococcus citri*, is a common pest on citrus, as well as indoor ornamentals and landscape scrubs. Mealybugs are piercing-sucking insects that feed on plant phloem, which can reduce plant growth. Also, the insects excrete sticky honeydew, which can cause growth of black sooty mold. Indoor-grown plants are especially vulnerable to mealybug infestations, because of the mild temperatures and the absence of most natural enemies. Mealybugs are generally challenging to manage with insecticides (<http://ipm.ucanr.edu/PMG/PESTNOTES/pn74174.html>).

The purpose of this study was to determine efficacy of new active ingredient formulations and new biopesticides for managing mealybug infestations environmental horticulture plants. A total of 77 individually potted Common Coleus (*Plectranthus scutellarioides*) plants were used and subjected to one of 11 treatments (seven replications). Four of the treatments were one dosage of insecticides applied via foliar, six of the treatments were one product of insecticides at multiple dosages applied via foliar, and one treatment was water only (positive control). After initial experimental infestations, numbers of egg masses, crawlers, and mobiles (immatures larger than crawlers + adults) were assessed: -1 (baseline), 3, 7, 14, and 28 days after onset of spray applications (= days after application, DAT). Individual plants were also assessed for possible signs of phytotoxicity of both leaves and flowers.

We predicted that foliar applications of insecticides would cause significant decrease in Mealybug counts over time compared to counts on positive control plants. We also predicted that foliar applications of insecticides would not cause significant increase in phytotoxicity of neither leaves nor flowers.

In several previous reports, we have highlighted the issue that Capsil as an adjuvant is: 1) not part of all treatments, and 2) it is not included as a second control (Capsil only). For the experimental to meet basic standards, it is important Capsil by itself is included as a treatment. This is of particular importance as some of the insecticides, which in this and previous studies have yielded promising results, include Capsil in formulations. As observed in previous studies, consistent and significant reductions in average counts of mealybug egg masses, crawlers, and mobiles (compared to water treated control plants) were observed at 28 DAT with several of the insecticide treatment. In this year's study, highest and most consistent reductions (compared to water treated controls) were obtained with the following treatments: ISM 555 applied at both low and high doses (with adjuvant Capsil), SP3014 (with adjuvant Capsil), Distance (without Capsil), TetraCURB Max (without Capsil), and V-10433 (without Capsil). Neither average width nor average height of Common Coleus plants was significantly affected by insecticide treatments. None of the treatments were found to cause any detectable foliar phytotoxicity and/or signs of phytotoxicity of flowers. Based on a data from previous IR4 project, we have published an article about use of optical sensing to detect and quantify phytotoxicity in ornamental plants (<https://doi.org/10.21273/HORTTECH04866-21>).

**Researcher:** Nansen                      **Date:** 12/5/22  
**Project Title:** Efficacy of Management Tools for Mealybug  
**Protocol #:** S22-005                      **PRnumbers:** 34406, 34407, 34408, 34409, 35069, 34410, 29844

**Results Table**

PI Christian Nansen is licensed to apply pesticides and performed all preparations of pesticide formulations and spray applications. A video about our approach to pesticide applications and its role in research and teaching is available: <https://www.youtube.com/watch?v=DtYFrvkguKQ>.

*Mealybug – egg masses*

Table 1 shows that there were no significant differences among treatments at the onset of the study (-1 and 3 DAT). At 7 DAT, plants sprayed with ISM-555 at the high dose had significantly less egg masses than the average of control plants. At 10 DAT, all treatments had significantly less egg masses than the average of control plants, and this significant difference persisted until 28 DAT (except for plants treated with MBI 306). Overall, all treatments caused significant reduction in mealybug egg masses 10-28 DAT.

*Mealybug – crawlers*

Table 2 shows that there were no significant differences among treatments at the onset of the study (-1 DAT). At 3 DAT, plants sprayed with TetraCURB Max or V-10433 had significantly less mealybug crawlers than the average of control plants. This significant reduction persisted over time until 28 DAT. At 10 DAT, all treatments showed significant reduction in average crawler counts, except for MBI 306 applied at the high dose. At 28 DAT, all treatments showed significant reduction in average crawler counts. Overall, Distance and both dosages of ISM-555 showed the most consistent reduction in average crawler counts.

*Mealybug – mobiles*

Table 3 shows that there were no significant differences among treatments at the onset of the study (-1 and 3 DAT). At 7 DAT, TetraCURB Max and Distance treatments caused a significant reduction in average counts of mobiles, and these effects persisted throughout the study period. At 10 DAT, all treatments caused a significant reduction in average counts of mobiles compared control plants (except for plants treated with MBI 306). At 28 DAT, all treatments showed significant reduction in average mobile counts. Overall, TetraCURB Max, Distance and both dosages of ISM-555 showed the most consistent reduction in average mobile counts.

*Plant morphometric*

Figure 1 shows average plant morphometrics. Neither average plant height (Figure 1a) nor average plant width (Figure 1b) varied significantly among treatments at the two time points [-1 (orange) and 28 (turquoise) DAT].

*Phytotoxicity*

None of the 10 treatments were found to cause any detectable foliar phytotoxicity and/or signs of phytotoxicity of flowers. Based on a data from previous IR4 project, we have published an article about use of optical sensing to detect and quantify phytotoxicity in ornamental plants (<https://doi.org/10.21273/HORTTECH04866-21>).

**Table 1.** Average mealybug egg masses at six time points (date after treatment, DAT, from -1 to 28)

TRT#	Insecticide	Dose	Unit	Adjuv.	Dose	-1	3	7	10	14	28
1	Control	0	Na	Na	0	4.9	5.7	4.4(a)	6.1(a)	7.6(a)	9.4(a)
2	Distance	940	uL	Na	0	4.1	2.1	1.0(ab)	1.1(b)	0.3(b)	0.0(b)
3	ISM-555	300	uL	Capsil	500	5.4	3.0	1.7(ab)	1.3(b)	0.1(b)	0.0(b)

**Researcher:** Nansen                      **Date:** 12/5/22  
**Project Title:** Efficacy of Management Tools for Mealybug  
**Protocol #:** S22-005                      **PRnumbers:** 34406, 34407, 34408, 34409, 35069, 34410, 29844

4	ISM-555	450	uL	Capsil	500	4.1	1.9	1.0(b)	0.9(b)	0.7(b)	0.0(b)
5	MBI 203 SC2	10	mL	Na	0	4.6	2.9	2.4(ab)	1.9(b)	2.7(b)	2.1(b)
6	MBI 306	780	uL	Na	0	5.6	4.4	2.3(ab)	1.7(b)	2.7(b)	2.3(b)
7	MBI 306	1.56	mL	Na	0	5.6	3.6	3.3(ab)	3.1(b)	5.3(ab)	3.4(b)
8	SP3014	1.25	mL	Capsil	500	6.6	3.6	2.4(ab)	1.7(b)	2.7(b)	1.3(b)
9	SP3014	2.5	mL	Capsil	500	6.6	3.7	3.1(ab)	2.7(b)	3.7(b)	2.0(b)
10	TetraCURB Max	20	mL	Na	0	3.3	1.7	1.7(ab)	0.7(b)	3.0(b)	0.9(b)
11	V-10433	0.86	mL	Na	0	4.3	2.9	1.7(ab)	1.3(b)	2.3(b)	1.3(b)
	F-value					0.831	1.923	<b>2.058</b>	<b>6.374</b>	<b>9.285</b>	<b>30.230</b>
	P-value					0.600	0.057	<b>0.041</b>	<b>&lt;0.001</b>	<b>&lt;0.001</b>	<b>&lt;0.001</b>

Columns in light blue describe insecticides in treatments, while columns in salmon color describe adjuvants in treatments. Dosages represent calculations for preparation of 1 Liter formulations to be applied with backpack sprayer. Letters in brackets denote significance ( $P < 0.05$ ) of tukey statistical comparisons, and time points with significant differences are highlighted in bold.

**Table 2.** Average mealybug crawlers at six time points (date after treatment, DAT, from -1 to 28)

TRT#	Insecticide	Dose	Unit	Adjuv.	Dose	-1	3	7	10	14	28
1	Control	0	Na	Na	0	17.0	20.7(a)	17.4	21.7(a)	21.6(a)	25.9(a)
2	Distance	940	uL	Na	0	14.3	11.3(ab)	7.4	4.4(b)	0.7(c)	0.0(c)
3	ISM-555	300	uL	Capsil	500	18.4	15.0(ab)	9.3	8.7(b)	1.1(c)	0.0(c)
4	ISM-555	450	uL	Capsil	500	18.6	14.9(ab)	8.4	8.3(b)	1.1(c)	0.0(c)
5	MBI 203 SC2	10	mL	Na	0	13.1	11.4(ab)	11.0	9.4(b)	9.3(bc)	10.4(b)
6	MBI 306	780	uL	Na	0	14.4	13.1(ab)	9.4	10.6(b)	14.1(a)	14.3(b)
7	MBI 306	1.56	mL	Na	0	14.9	11.7(ab)	10.7	13.7(ab)	17.7(a)	16.4(b)
8	SP3014	1.25	mL	Capsil	500	14.6	11.6(ab)	9.4	7.3(b)	10.4(ab)	7.3(b)
9	SP3014	2.5	mL	Capsil	500	14.0	12.9(ab)	11.9	8.1(b)	15.4(a)	13.6(b)
10	TetraCURB Max	20	mL	Na	0	12.9	9.4(b)	6.7	4.7(b)	11.3(bc)	4.1(bc)
11	V-10433	0.86	mL	Na	0	11.9	8.6(b)	7.6	7.1(b)	8.6(bc)	7.7(b)
	F-value					0.891	<b>2.526</b>	1.968	<b>4.872</b>	<b>10.351</b>	<b>19.010</b>
	P-value					0.547	<b>0.012</b>	0.051	<b>&lt;0.001</b>	<b>&lt;0.001</b>	<b>&lt;0.001</b>

Columns in light blue describe insecticides in treatments, while columns in salmon color describe adjuvants in treatments. Dosages represent calculations for preparation of 1 Liter formulations to be applied with backpack sprayer. Letters in brackets denote significance ( $P < 0.05$ ) of tukey statistical comparisons, and time points with significant differences are highlighted in bold.

**Table 3.** Average mealybug mobiles at six time points (date after treatment, DAT, from -1 to 28)

**Researcher:** Nansen                      **Date:** 12/5/22

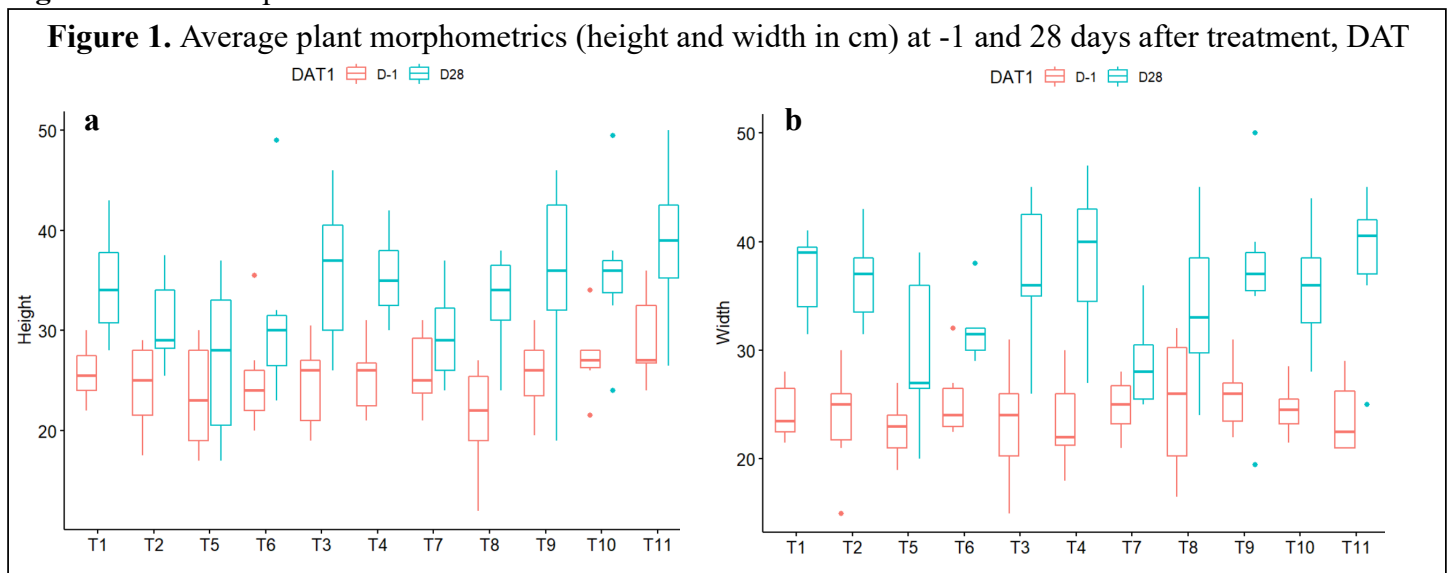
**Project Title:** Efficacy of Management Tools for Mealybug

**Protocol #:** S22-005    **PRnumbers:** 34406, 34407, 34408, 34409, 35069, 34410, 29844

TRT#	Insecticide	Dose	Unit	Adjuv.	Dose	-1	3	7	10	14	28
1	Control	0	Na	Na	0	73.3	78.4	74.1(a)	87.4(a)	105.6(a)	123.9(a)
2	Distance	940	uL	Na	0	71.7	57.9	30.4(b)	19.6(b)	6.7(b)	1.4(c)
3	ISM-555	300	uL	Capsil	500	77.0	66.1	39.0(ab)	23.3(b)	8.0(b)	2.1(c)
4	ISM-555	450	uL	Capsil	500	79.6	65.3	34.9(ab)	21.1(b)	9.0(b)	1.6(c)
5	MBI 203 SC2	10	mL	Na	0	64.0	54.7	52.9(ab)	46.1(b)	40.7(b)	41.6(bc)
6	MBI 306	780	uL	Na	0	77.6	66.3	48.3(ab)	42.3(b)	55.0(b)	59.7(b)
7	MBI 306	1.56	mL	Na	0	71.6	65.7	48.6(ab)	57.0(ab)	70.9(ab)	65.6(b)
8	SP3014	1.25	mL	Capsil	500	79.1	70.4	56.4(ab)	35.3(b)	46.0(b)	35.9(bc)
9	SP3014	2.5	mL	Capsil	500	83.4	73.9	65.4(ab)	47.6(b)	56.4(b)	50.9(b)
10	TetraCURB Max	20	mL	Na	0	60.3	44.0	29.9(b)	29.1(b)	40.6(b)	26.3(bc)
11	V-10433	0.86	mL	Na	0	61.4	47.6	43.0(ab)	34.4(b)	33.1(b)	33.3(bc)
	F-value					0.544	1.352	<b>2.453</b>	<b>5.899</b>	<b>11.370</b>	<b>20.420</b>
	P-value					0.852	0.222	<b>0.015</b>	<b>&lt;0.001</b>	<b>&lt;0.001</b>	<b>&lt;0.001</b>

Columns in light blue describe insecticides in treatments, while columns in salmon color describe adjuvants in treatments. Dosages represent calculations for preparation of 1 Liter formulations to be applied with backpack sprayer. Letters in brackets denote significance ( $P < 0.05$ ) of tukey statistical comparisons, and time points with significant differences are highlighted in bold.

**Figure 1.** Plant morphometrics



Box plots illustrating average plant height (figure 1a) and width (figure 1b) are presented for each of the 11 treatments and based on Measurements at two time points (-1 and 28 DAT).

**Researcher:** Nansen                      **Date:** 12/5/22  
**Project Title:** Efficacy of Management Tools for Mealybug  
**Protocol #:** S22-005                      **PRnumbers:** 34406, 34407, 34408, 34409, 35069, 34410, 29844

**Materials & Methods/Recordkeeping**

**Name(s) of Personnel Conducting Research:** Christian Nansen, Haleh Khodaverdi , Anil Mantri  
**Location of Trial (city/state):** Davis, CA

**Use Site (greenhouse/shadehouse/field container/etc):** Greenhouse

**Crop History**

**Crop Cultivar/Variety:** Common Coleus (*Plectranthus scutellarioides*)  
**Date of Seeding:**  
**Date of Emergence:**  
**Date of Transplanting:** 4/7/22  
**Potting Mix:** UC Agronomy mix (equal parts peat, sand, redwood bark and scoria)  
**Pot size & spacing:** 6.5-inch pots  
**Row spacing:**

**Experiment Information**

UC Agronomy mix (equal parts peat, sand, redwood bark and scoria)  
**Experimental Design:** Randomized complete block  
**Number of Reps:** Seven

This study was conducted in a research greenhouse on the University of California campus in Davis, CA. Plants (Common Coleus) were obtained from Greenheart Farms (Arroyo Grande, CA) and transplanted into UC Agronomy mix (equal parts peat, sand, redwood bark and scoria) in 6.5-inch pots. Plants received daily irrigation and fertilizer via a drip system. Plants were infested twice on 5/17/22 and 5/24/22 to ensure consistent Mealybug infestation levels in all plants. Beneficials (*Amblyseius Cucumeris* and *Phytoseiulus Persimilis*) were applied on 4/21/22. We used cottony egg masses from citrus mealybugs (*Planococcus citri*) from a colony maintained by the Nansen lab. To assess mealybug establishment on the plants immediately before onset of foliar applications (DAT = 0), a precount was done on DAT-1, 6/13/22. There were 11 treatments, each replicated seven times (coleus plants = 77). Pump spray applications were conducted using a Dramm BP-4 backpack sprayer.

**Researcher:** Nansen                      **Date:** 12/5/22  
**Project Title:** Efficacy of Management Tools for Mealybug  
**Protocol #:** S22-005                                      **PRnumbers:** 34406, 34407, 34408, 34409, 35069, 34410, 29844

**Table 4.** Actions performed during this study

Action	Days After Treatment (DAT)											
	-96	-68	-54	-28	-21	-1	0	3	7	10	14	28
Coleus Received	X											
Transplant		X										
Apply Beneficials			X									
Infestation				X	X							
Morphometrics						X						X
Precount Evaluation						X						
Evaluation								X	X	X	X	X
Application							X	X	X	X	X	

For mealybug counts, one fully matured compound leaf per plant, consisting of 5 leaflets, was selected per plant, from an infested area. Egg masses, crawlers, mobiles (immatures larger than crawlers + adults) were counted on both sides of the compound leaf. Leaves of approximately the same size were selected assessment. Regarding morphometrics, plant height and width were measured. Phytotoxicity of leaves was scored on a 0 to 10 scale (0 = no phytotoxicity, 10 = dead plant). Phytotoxicity of flowers was also scored on a 0 to 10 scale, with 0% = no flowers showing signs of phytotoxicity and 100% = to all flowers showing signs of phytotoxicity. Thus, flower phytotoxicity was based on dichotomous assessment of individual flowers (phytotoxicity yes/no). Before transplanting, predatory mites (*Phytoseiulus persimilis*) were released in the greenhouse to control spider mite infestations.

Statistical analysis: Separate pairwise tukey analyses of variance were performed in R [library(multcomp)] for each combination of days after onset of treatments.

Raw Data: Dates, treatments, counts egg-mass, mobiles, and crawlers, and environmental conditions. Please see attached file.

Application Equipment: Dramm hydraulic sprayer  
 Christian Nansen performed all pesticide spray applications.



**Researcher:** Nansen                      **Date:** 12/5/22  
**Project Title:** Efficacy of Management Tools for Mealybug  
**Protocol #:** S22-005                      **PRnumbers:** 34406, 34407, 34408, 34409, 35069, 34410, 29844

The following products and dosages were applied to individually potted marigold plants (Table 5) and evaluated on the following days (Table 6).

**Table 5.** Products and dosages used as treatments

Treatment	Amount/L	Unit	Adjuvant	Adjuvant Amount/L	Unit	Foliar/ Drench	Application				
							0	3	7	10	14
NA	NA	NA				Foliar	X				
Distance	940	uL				Foliar	X				
ISM-555	300	uL	Capsil	500	uL	Foliar	X				X
ISM-555	450	uL	Capsil	500	uL	Foliar	X				X
MBI 203 SC2	10	mL				Foliar	X		X		X
MBI 306	780	uL				Foliar	X		X		X
MBI 306	1.56	mL				Foliar	X		X		X
SP3014	1.25	mL	Capsil	500	uL	Foliar	X		X		X
SP3014	2.5	mL	Capsil	500	uL	Foliar	X		X		X
TetraCURB Max	20	mL				Foliar	X		X		X
V-10433	0.86	mL				Foliar	X	X	X	X	X

**Table 6.** Evaluation days (days after treatment, DAT)

Treatment	DAT					
	-1	3	7	10	14	28
NA	X	X	X	X	X	X
Distance	X	X	X	X	X	X
ISM-555	X	X	X	X	X	X
ISM-555	X	X	X	X	X	X
MBI 203 SC2	X	X	X	X	X	X
MBI 306	X	X	X	X	X	X
MBI 306	X	X	X	X	X	X
SP3014	X	X	X	X	X	X
SP3014	X	X	X	X	X	X
TetraCURB Max	X	X	X	X	X	X
V-10433	X	X	X	X	X	X

**Photos**



**Researcher:** Nansen

**Date:** 12/5/22

**Project Title:** Efficacy of Management Tools for Mealybug

**Protocol #:** S22-005

**PRnumbers:** 34406, 34407, 34408, 34409, 35069,  
34410, 29844

**Photos.** Preparation of plants used in this study

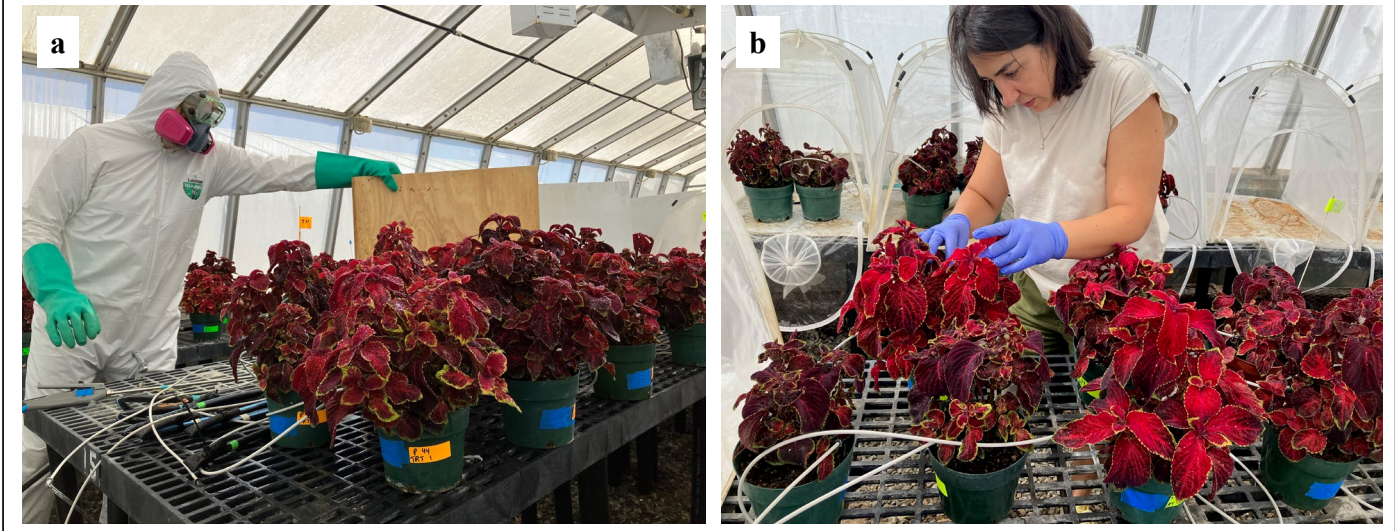


Photo shows how the plants of different treatments are blocked off from each other to ensure all plants in each treatment have only the applied insecticide applied. Christian Nansen is placing wooden boards between plants of different treatments before spraying groups of plants assigned to each treatment. In photo b, Haleh Khodaverdi is sampling a compound leaf for assessment of mealybug damage.



TAB NAME: MealybugEvaluationData												
DAT	Date	Plant #	Treatment #	Crawlers	Mobiles	Egg Mass	Phytotoxicity (Foliar)	Phytotoxicity (flower)	Damage	Height(cm)	Width(cm)	Comment
-1	6/13/2022	1	1	11	57	4				23	27	
-1	6/13/2022	2	2	11	73	2				19	21	
-1	6/13/2022	3	5	21	118	9				23	23	
-1	6/13/2022	4	6	13	65	2				20	26	
-1	6/13/2022	5	3	21	93	8				20	24	
-1	6/13/2022	6	4	18	87	5				22	22	
-1	6/13/2022	7	5	21	120	8				18	22	
-1	6/13/2022	8	6	16	90	7				24	27	
-1	6/13/2022	9	7	19	101	10				25	26	
-1	6/13/2022	10	8	13	79	4				24.3	26	
-1	6/13/2022	11	9	14	88	8				25	23	
-1	6/13/2022	12	7	15	66	3				31	28	
-1	6/13/2022	13	8	6	30	2				26.5	28.5	
-1	6/13/2022	14	10	11	59	5				26	26	
-1	6/13/2022	15	9	3	21	0				27	31	
-1	6/13/2022	16	10	14	33	1				28	28.5	
-1	6/13/2022	17	11	5	19	0				36	21	
-1	6/13/2022	18	11	16	69	4				36	29	
-1	6/13/2022	19	1	35	107	6				25.5	26	
-1	6/13/2022	20	1	11	49	3				28	28	
-1	6/13/2022	21	2	13	51	3				27	30	
-1	6/13/2022	22	3	18	97	4				22	26	
-1	6/13/2022	23	4	15	51	2				31	28	
-1	6/13/2022	24	5	7	27	2				30	25	
-1	6/13/2022	25	6	15	69	4				35.5	32	
-1	6/13/2022	26	7	10	53	3				24.5	27.5	
-1	6/13/2022	27	2	15	98	8				25	26	
-1	6/13/2022	28	8	19	101	6				27	32	
-1	6/13/2022	29	3	17	83	7				28	31	
-1	6/13/2022	30	8	13	67	5				22	32	
-1	6/13/2022	31	4	12	93	2				21	30	
-1	6/13/2022	32	9	15	81	4				29	27.5	
-1	6/13/2022	33	5	8	23	1				28	27	
-1	6/13/2022	34	6	19	103	7				22.5	24	
-1	6/13/2022	35	7	13	63	6				21	25	
-1	6/13/2022	36	10	16	77	2				26.5	25	
-1	6/13/2022	37	8	12	69	8				17	19.5	
-1	6/13/2022	38	11	3	22	0				27	25.5	
-1	6/13/2022	39	9	17	91	9				19.5	22	

-1	6/13/2022	40	10	23	127	11				21.5	23.5
-1	6/13/2022	41	9	16	103	12				22	26
-1	6/13/2022	42	11	12	81	5				29	27
-1	6/13/2022	43	1	13	52	2				30	23
-1	6/13/2022	44	1	17	79	3				25	23.5
-1	6/13/2022	45	2	8	53	5				29	25
-1	6/13/2022	46	3	25	62	6				26	16.5
-1	6/13/2022	47	2	13	57	3				24	22.5
-1	6/13/2022	48	4	11	40	2				27	21
-1	6/13/2022	49	3	10	59	3				30.5	26
-1	6/13/2022	50	5	5	17	1				28	23
-1	6/13/2022	51	6	13	72	8				25	22.5
-1	6/13/2022	52	7	16	83	4				28	25
-1	6/13/2022	53	8	21	110	11				12	16.5
-1	6/13/2022	54	9	19	117	10				26	24
-1	6/13/2022	55	4	32	118	9				26	21.5
-1	6/13/2022	56	5	15	69	4				17	19
-1	6/13/2022	57	10	10	56	3				28	21.5
-1	6/13/2022	58	11	15	77	7				27	21
-1	6/13/2022	59	6	16	93	8				27	23
-1	6/13/2022	60	7	12	38	7				30.5	21.5
-1	6/13/2022	61	8	18	98	10				21	21
-1	6/13/2022	62	10	6	21	0				34	23
-1	6/13/2022	63	1	15	76	10				22	21.5
-1	6/13/2022	64	9	14	83	3				31	26.5
-1	6/13/2022	65	2	9	61	5				17.5	15
-1	6/13/2022	66	3	17	52	4				26	24
-1	6/13/2022	67	4	11	83	6				23	18
-1	6/13/2022	68	10	10	49	1				27	24.5
-1	6/13/2022	69	5	15	74	7				20	20
-1	6/13/2022	70	11	19	97	9				24	22.5
-1	6/13/2022	71	6	9	51	3				21.5	23
-1	6/13/2022	72	1	17	93	6				27	22
-1	6/13/2022	73	2	31	109	3				29	26
-1	6/13/2022	74	7	19	97	6				23	21
-1	6/13/2022	75	3	21	93	6				19	15
-1	6/13/2022	76	11	13	65	5				26.5	21
-1	6/13/2022	77	4	31	85	3				26.5	24
3	6/17/2022	1	1	13	41	2	0	0			
3	6/17/2022	2	2	10	65	0	0	0			
3	6/17/2022	3	5	16	85	3	0	0			

3	6/17/2022	4	6	8	61	3	0	0				
3	6/17/2022	5	3	16	88	6	0	0				
3	6/17/2022	6	4	15	68	3	0	0				
3	6/17/2022	7	5	12	93	5	0	0				
3	6/17/2022	8	6	14	79	5	0	0				
3	6/17/2022	9	7	15	97	7	0	0				
3	6/17/2022	10	8	14	61	1	0	0				
3	6/17/2022	11	9	15	76	5	0	0				
3	6/17/2022	12	7	10	59	3	0	0				
3	6/17/2022	13	8	2	27	0	0	0				
3	6/17/2022	14	10	5	38	3	0	0				
3	6/17/2022	15	9	0	15	0	0	0				
3	6/17/2022	16	10	8	30	0	0	0				
3	6/17/2022	17	11	5	13	0	0	0				
3	6/17/2022	18	11	11	49	1	0	0				
3	6/17/2022	19	1	37	101	8	0	0				
3	6/17/2022	20	1	16	65	3	0	0				
3	6/17/2022	21	2	9	39	1	0	0				
3	6/17/2022	22	3	13	89	2	0	0				
3	6/17/2022	23	4	13	41	0	0	0				
3	6/17/2022	24	5	9	31	3	0	0				
3	6/17/2022	25	6	11	48	4	0	0				
3	6/17/2022	26	7	7	49	1	0	0				
3	6/17/2022	27	2	13	75	4	0	0				
3	6/17/2022	28	8	16	89	3	0	0				
3	6/17/2022	29	3	14	76	5	0	0				
3	6/17/2022	30	8	7	55	4	0	0				
3	6/17/2022	31	4	10	89	3	0	0				
3	6/17/2022	32	9	13	77	2	0	0				
3	6/17/2022	33	5	14	31	0	0	0				
3	6/17/2022	34	6	20	93	5	0	0				
3	6/17/2022	35	7	9	55	4	0	0				
3	6/17/2022	36	10	15	65	0	0	0				
3	6/17/2022	37	8	9	71	5	0	0				
3	6/17/2022	38	11	5	18	1	0	0				
3	6/17/2022	39	9	14	83	5	0	0				
3	6/17/2022	40	10	18	96	8	0	0				
3	6/17/2022	41	9	19	99	4	0	0				
3	6/17/2022	42	11	10	67	4	0	0				
3	6/17/2022	43	1	22	81	5	0	0				
3	6/17/2022	44	1	16	68	6	0	0				

3	6/17/2022	45	2	3	43	2	0	0				
3	6/17/2022	46	3	17	53	3	0	0				
3	6/17/2022	47	2	15	38	0	0	0				
3	6/17/2022	48	4	7	29	0	0	0				
3	6/17/2022	49	3	12	47	0	0	0				
3	6/17/2022	50	5	3	15	1	0	0				
3	6/17/2022	51	6	15	61	4	0	0				
3	6/17/2022	52	7	11	78	2	0	0				
3	6/17/2022	53	8	18	97	6	0	0				
3	6/17/2022	54	9	21	98	7	0	0				
3	6/17/2022	55	4	27	93	6	0	0				
3	6/17/2022	56	5	13	57	3	0	0				
3	6/17/2022	57	10	9	31	0	0	0				
3	6/17/2022	58	11	11	57	5	0	0				
3	6/17/2022	59	6	13	83	7	0	0				
3	6/17/2022	60	7	13	31	3	0	0				
3	6/17/2022	61	8	15	93	6	0	0				
3	6/17/2022	62	10	0	11	0	0	0				
3	6/17/2022	63	1	22	92	8	0	0				
3	6/17/2022	64	9	8	69	3	0	0				
3	6/17/2022	65	2	11	58	4	0	0				
3	6/17/2022	66	3	15	31	1	0	0				
3	6/17/2022	67	4	9	69	0	0	0				
3	6/17/2022	68	10	11	37	1	0	0				
3	6/17/2022	69	5	13	71	5	0	0				
3	6/17/2022	70	11	15	71	7	0	0				
3	6/17/2022	71	6	11	39	3	0	0				
3	6/17/2022	72	1	19	101	8	0	0				
3	6/17/2022	73	2	18	87	4	0	0				
3	6/17/2022	74	7	17	91	5	0	0				
3	6/17/2022	75	3	18	79	4	0	0				
3	6/17/2022	76	11	3	58	2	0	0				
3	6/17/2022	77	4	23	68	1	0	0				
7	6/21/2022	1	1	16	58	3	0	0				
7	6/21/2022	2	2	13	53	2	0	0				
7	6/21/2022	3	5	17	63	1	0	0				
7	6/21/2022	4	6	3	16	0	0	0				
7	6/21/2022	5	3	6	21	1	0	0				
7	6/21/2022	6	4	11	56	2	0	0				
7	6/21/2022	7	5	13	77	4	0	0				
7	6/21/2022	8	6	15	83	3	0	0				

7	6/21/2022	9	7	7	51	3	0	0				
7	6/21/2022	10	8	7	43	2	0	0				
7	6/21/2022	11	9	13	61	6	0	0				
7	6/21/2022	12	7	5	53	3	0	0				
7	6/21/2022	13	8	0	19	0	0	0				
7	6/21/2022	14	10	0	16	2	0	0				
7	6/21/2022	15	9	0	6	0	0	0				
7	6/21/2022	16	10	5	21	1	0	0				
7	6/21/2022	17	11	3	10	1	0	0				
7	6/21/2022	18	11	9	27	0	0	0				
7	6/21/2022	19	1	17	81	5	0	0				
7	6/21/2022	20	1	21	77	5	0	0				
7	6/21/2022	21	2	3	9	0	0	0				
7	6/21/2022	22	3	11	95	4	0	0				
7	6/21/2022	23	4	7	29	1	0	0				
7	6/21/2022	24	5	0	15	0	0	0				
7	6/21/2022	25	6	7	37	3	0	0				
7	6/21/2022	26	7	13	39	0	0	0				
7	6/21/2022	27	2	8	31	1	0	0				
7	6/21/2022	28	8	11	73	1	0	0				
7	6/21/2022	29	3	4	18	2	0	0				
7	6/21/2022	30	8	10	48	0	0	0				
7	6/21/2022	31	4	4	19	0	0	0				
7	6/21/2022	32	9	9	55	0	0	0				
7	6/21/2022	33	5	10	45	2	0	0				
7	6/21/2022	34	6	10	33	1	0	0				
7	6/21/2022	35	7	13	69	7	0	0				
7	6/21/2022	36	10	17	62	0	0	0				
7	6/21/2022	37	8	15	83	6	0	0				
7	6/21/2022	38	11	3	11	0	0	0				
7	6/21/2022	39	9	19	101	6	0	0				
7	6/21/2022	40	10	6	24	3	0	0				
7	6/21/2022	41	9	23	108	6	0	0				
7	6/21/2022	42	11	11	70	1	0	0				
7	6/21/2022	43	1	15	73	4	0	0				
7	6/21/2022	44	1	13	59	5	0	0				
7	6/21/2022	45	2	2	19	0	0	0				
7	6/21/2022	46	3	11	37	1	0	0				
7	6/21/2022	47	2	7	37	0	0	0				
7	6/21/2022	48	4	2	13	0	0	0				
7	6/21/2022	49	3	5	18	0	0	0				



7	6/21/2022	50	5	8	21	2	0	0				
7	6/21/2022	51	6	11	57	2	0	0				
7	6/21/2022	52	7	23	42	6	0	0				
7	6/21/2022	53	8	13	87	4	0	0				
7	6/21/2022	54	9	16	77	3	0	0				
7	6/21/2022	55	4	17	69	3	0	0				
7	6/21/2022	56	5	10	63	2	0	0				
7	6/21/2022	57	10	6	29	2	0	0				
7	6/21/2022	58	11	8	41	5	0	0				
7	6/21/2022	59	6	11	71	5	0	0				
7	6/21/2022	60	7	3	16	0	0	0				
7	6/21/2022	61	8	10	42	4	0	0				
7	6/21/2022	62	10	0	5	0	0	0				
7	6/21/2022	63	1	15	75	4	0	0				
7	6/21/2022	64	9	3	50	1	0	0				
7	6/21/2022	65	2	5	15	1	0	0				
7	6/21/2022	66	3	18	45	3	0	0				
7	6/21/2022	67	4	4	35	1	0	0				
7	6/21/2022	68	10	13	52	4	0	0				
7	6/21/2022	69	5	19	86	6	0	0				
7	6/21/2022	70	11	13	81	5	0	0				
7	6/21/2022	71	6	9	41	2	0	0				
7	6/21/2022	72	1	25	96	5	0	0				
7	6/21/2022	73	2	14	49	3	0	0				
7	6/21/2022	74	7	11	70	4	0	0				
7	6/21/2022	75	3	10	39	1	0	0				
7	6/21/2022	76	11	6	61	0	0	0				
7	6/21/2022	77	4	14	23	0	0	0				
10	6/24/2022	1	1	24	41	8	0	0				
10	6/24/2022	2	2	6	27	3	0	0				
10	6/24/2022	3	5	11	78	3	0	0				
10	6/24/2022	4	6	5	31	0	0	0				
10	6/24/2022	5	3	3	8	0	0	0				
10	6/24/2022	6	4	11	27	0	0	0				
10	6/24/2022	7	5	10	52	2	0	0				
10	6/24/2022	8	6	18	67	2	0	0				
10	6/24/2022	9	7	10	41	4	0	0				
10	6/24/2022	10	8	0	14	0	0	0				
10	6/24/2022	11	9	5	17	1	0	0				
10	6/24/2022	12	7	9	48	2	0	0				
10	6/24/2022	13	8	0	11	1	0	0				

10	6/24/2022	14	10	0	6	0	0	0				
10	6/24/2022	15	9	0	12	1	0	0				
10	6/24/2022	16	10	3	26	0	0	0				
10	6/24/2022	17	11	2	15	0	0	0				
10	6/24/2022	18	11	15	39	2	0	0				
10	6/24/2022	19	1	19	88	6	0	0				
10	6/24/2022	20	1	25	109	8	0	0				
10	6/24/2022	21	2	0	10	0	0	0				
10	6/24/2022	22	3	13	33	2	0	0				
10	6/24/2022	23	4	0	11	0	0	0				
10	6/24/2022	24	5	0	18	1	0	0				
10	6/24/2022	25	6	13	58	5	0	0				
10	6/24/2022	26	7	13	27	1	0	0				
10	6/24/2022	27	2	9	31	1	0	0				
10	6/24/2022	28	8	8	63	2	0	0				
10	6/24/2022	29	3	0	13	1	0	0				
10	6/24/2022	30	8	2	19	0	0	0				
10	6/24/2022	31	4	5	5	0	0	0				
10	6/24/2022	32	9	0	11	0	0	0				
10	6/24/2022	33	5	8	29	0	0	0				
10	6/24/2022	34	6	13	51	2	0	0				
10	6/24/2022	35	7	21	89	6	0	0				
10	6/24/2022	36	10	8	28	0	0	0				
10	6/24/2022	37	8	16	67	4	0	0				
10	6/24/2022	38	11	0	18	1	0	0				
10	6/24/2022	39	9	15	89	7	0	0				
10	6/24/2022	40	10	7	57	2	0	0				
10	6/24/2022	41	9	16	83	5	0	0				
10	6/24/2022	42	11	8	59	0	0	0				
10	6/24/2022	43	1	18	97	6	0	0				
10	6/24/2022	44	1	22	101	6	0	0				
10	6/24/2022	45	2	3	11	1	0	0				
10	6/24/2022	46	3	15	51	3	0	0				
10	6/24/2022	47	2	10	29	2	0	0				
10	6/24/2022	48	4	5	18	1	0	0				
10	6/24/2022	49	3	4	13	0	0	0				
10	6/24/2022	50	5	7	19	0	0	0				
10	6/24/2022	51	6	5	19	0	0	0				
10	6/24/2022	52	7	19	73	5	0	0				
10	6/24/2022	53	8	10	23	1	0	0				
10	6/24/2022	54	9	17	91	5	0	0				

10	6/24/2022	55	4	21	41	3	0	0				
10	6/24/2022	56	5	13	58	3	0	0				
10	6/24/2022	57	10	0	33	1	0	0				
10	6/24/2022	58	11	1	13	0	0	0				
10	6/24/2022	59	6	15	39	1	0	0				
10	6/24/2022	60	7	9	44	1	0	0				
10	6/24/2022	61	8	15	50	4	0	0				
10	6/24/2022	62	10	0	36	1	0	0				
10	6/24/2022	63	1	23	77	5	0	0				
10	6/24/2022	64	9	4	30	0	0	0				
10	6/24/2022	65	2	3	18	0	0	0				
10	6/24/2022	66	3	12	19	1	0	0				
10	6/24/2022	67	4	5	17	1	0	0				
10	6/24/2022	68	10	15	18	1	0	0				
10	6/24/2022	69	5	17	69	4	0	0				
10	6/24/2022	70	11	15	59	4	0	0				
10	6/24/2022	71	6	5	31	2	0	0				
10	6/24/2022	72	1	21	99	4	0	0				
10	6/24/2022	73	2	0	11	1	0	0				
10	6/24/2022	74	7	15	77	3	0	0				
10	6/24/2022	75	3	14	26	2	0	0				
10	6/24/2022	76	11	9	38	2	0	0				
10	6/24/2022	77	4	11	29	1	0	0				
14	6/28	1	1	19	87	10	0	0				
14	6/28	2	2	1	8	0	0	0				
14	6/28	3	5	17	90	5	0	0				
14	6/28	4	6	16	51	3	0	0				
14	6/28	5	3	0	2	0	0	0				
14	6/28	6	4	3	11	1	0	0				
14	6/28	7	5	15	68	4	0	0				
14	6/28	8	6	18	91	5	0	0				
14	6/28	9	7	20	79	6	0	0				
14	6/28	10	8	3	18	0	0	0				
14	6/28	11	9	11	39	3	0	0				
14	6/28	12	7	18	71	6	0	0				
14	6/28	13	8	2	17	1	0	0				
14	6/28	14	10	1	19	0	0	0				
14	6/28	15	9	15	19	3	0	0				
14	6/28	16	10	7	43	3	0	0				
14	6/28	17	11	0	6	0	0	0				
14	6/28	18	11	13	41	4	0	0				

14	6/28	19	1	17	89	5	0	0				
14	6/28	20	1	21	111	6	0	0				
14	6/28	21	2	0	3	0	0	0				
14	6/28	22	3	3	16	0	0	0				
14	6/28	23	4	3	8	1	0	0				
14	6/28	24	5	2	13	2	0	0				
14	6/28	25	6	19	61	2	0	0				
14	6/28	26	7	11	39	4	0	0				
14	6/28	27	2	1	11	0	0	0				
14	6/28	28	8	4	47	0	0	0				
14	6/28	29	3	0	8	0	0	0				
14	6/28	30	8	5	21	0	0	0				
14	6/28	31	4	0	0	0	0	0				
14	6/28	32	9	5	23	0	0	0				
14	6/28	33	5	0	3	0	0	0				
14	6/28	34	6	11	48	1	0	0				
14	6/28	35	7	18	101	7	0	0				
14	6/28	36	10	15	44	3	0	0				
14	6/28	37	8	19	93	6	0	0				
14	6/28	38	11	3	11	2	0	0				
14	6/28	39	9	20	97	6	0	0				
14	6/28	40	10	21	71	6	0	0				
14	6/28	41	9	28	113	8	0	0				
14	6/28	42	11	5	51	1	0	0				
14	6/28	43	1	25	131	9	0	0				
14	6/28	44	1	19	99	8	0	0				
14	6/28	45	2	0	3	1	0	0				
14	6/28	46	3	5	27	1	0	0				
14	6/28	47	2	3	18	1	0	0				
14	6/28	48	4	1	7	0	0	0				
14	6/28	49	3	0	0	0	0	0				
14	6/28	50	5	3	21	1	0	0				
14	6/28	51	6	9	41	1	0	0				
14	6/28	52	7	21	69	4	0	0				
14	6/28	53	8	15	33	3	0	0				
14	6/28	54	9	23	83	4	0	0				
14	6/28	55	4	0	11	1	0	0				
14	6/28	56	5	15	39	4	0	0				
14	6/28	57	10	10	49	3	0	0				
14	6/28	58	11	7	21	1	0	0				
14	6/28	59	6	18	58	4	0	0				

14	6/28	60	7	13	38	2	0	0				
14	6/28	61	8	25	93	9	0	0				
14	6/28	62	10	8	27	2	0	0				
14	6/28	63	1	25	99	7	0	0				
14	6/28	64	9	6	21	2	0	0				
14	6/28	65	2	0	2	0	0	0				
14	6/28	66	3	0	0	0	0	0				
14	6/28	67	4	1	20	2	0	0				
14	6/28	68	10	17	31	4	0	0				
14	6/28	69	5	13	51	3	0	0				
14	6/28	70	11	19	71	5	0	0				
14	6/28	71	6	8	35	3	0	0				
14	6/28	72	1	25	123	8	0	0				
14	6/28	73	2	0	2	0	0	0				
14	6/28	74	7	23	99	8	0	0				
14	6/28	75	3	0	3	0	0	0				
14	6/28	76	11	13	31	3	0	0				
14	6/28	77	4	0	6	0	0	0				
28	7/12	1	1	25	109	11					28	33
28	7/12	2	2	0	3	0					29	38
28	7/12	3	5	13	76	4					28	26
28	7/12	4	6	14	71	3					23	30
28	7/12	5	3	0	0	0					26	26
28	7/12	6	4	0	3	0					30	27
28	7/12	7	5	13	53	3					21	20
28	7/12	8	6	20	76	4					23	29
28	7/12	9	7	13	66	5					28	26
28	7/12	10	8	0	11	0					37	45
28	7/12	11	9	15	31	1					36	38
28	7/12	12	7	17	59	2					34	30
28	7/12	13	8	0	6	0					38	32
28	7/12	14	10	0	3	0					35	41
28	7/12	15	9	11	13	0					46	50
28	7/12	16	10	0	27	1					36	31
28	7/12	17	11	0	13	0					50	41
28	7/12	18	11	5	17	1					46	40.5
28	7/12	19	1	25	119	8					34	40
28	7/12	20	1	19	98	9					43	39
28	7/12	21	2	0	0	0					36	43
28	7/12	22	3	0	4	0					26	36
28	7/12	23	4	0	0	0					42	47

28	7/12	24	5	7	21	1				35	36
28	7/12	25	6	16	76	3				49	38
28	7/12	26	7	17	46	2				29	31
28	7/12	27	2	0	0	0				28	39
28	7/12	28	8	6	33	0				36	42
28	7/12	29	3	0	0	0				37	41
28	7/12	30	8	0	8	0				34	33
28	7/12	31	4	0	0	0				31	38
28	7/12	32	9	1	19	0				44	36
28	7/12	33	5	0	5	0				31	36
28	7/12	34	6	14	38	0				30	32
28	7/12	35	7	15	88	3				24	25
28	7/12	36	10	6	38	1				36	36
28	7/12	37	8	15	76	3				24	24
28	7/12	38	11	1	9	0				39	45
28	7/12	39	9	18	83	3				19	19.5
28	7/12	40	10	6	53	2				24	28
28	7/12	41	9	19	97	5				29	35
28	7/12	42	11	11	63	2				39	36
28	7/12	43	1	22	149	10				40	41
28	7/12	44	1	26	115	7				31	39
28	7/12	45	2	0	0	0				37.5	37
28	7/12	46	3	0	11	0				40	45
28	7/12	47	2	0	7	0				28.5	34
28	7/12	48	4	0	0	0				40	41
28	7/12	49	3	0	0	0				41	44
28	7/12	50	5	8	37	2				37	39
28	7/12	51	6	14	67	3				31	31.5
28	7/12	52	7	18	58	3				30.5	25
28	7/12	53	8	13	44	1				33	35
28	7/12	54	9	18	76	3				41	40
28	7/12	55	4	0	3	0				34	31
28	7/12	56	5	11	34	3				17	27
28	7/12	57	10	0	13	0				38	36
28	7/12	58	11	5	11	0				35	43
28	7/12	59	6	19	71	2				30	30
28	7/12	60	7	18	51	3				37	36
28	7/12	61	8	17	73	5				29	27.5
28	7/12	62	10	3	10	0				49.5	44
28	7/12	63	1	31	135	11				30.5	35
28	7/12	64	9	13	37	2				35	37

28	7/12	65	2	0	0	0				25.5	31.5
28	7/12	66	3	0	0	0				46	34
28	7/12	67	4	0	5	0				35	45
28	7/12	68	10	14	40	2				32.5	34
28	7/12	69	5	21	65	2				20	27
28	7/12	70	11	17	58	3				26.5	25
28	7/12	71	6	3	19	1				32	32
28	7/12	72	1	33	142	10				35.5	31.5
28	7/12	73	2	0	0	0				32	33
28	7/12	74	7	17	91	6				24	28
28	7/12	75	3	0	0	0				34	36
28	7/12	76	11	15	62	3				35.5	38
28	7/12	77	4	0	0	0				36	40



TAB NAME: HOBO Raw Data

Plot Title: 21067460 GH 217, IR4

#	Date Time, GMT -0700	Temp, °F	RH, %	DewPt, °F	
1	2022-06-14 10:04:08		74.60	42.19	50.15
2	2022-06-14 10:33:08		92.71	57.21	75.39
3	2022-06-14 11:02:08		81.45	44.79	57.97
4	2022-06-14 11:31:08		80.72	45.23	57.58
5	2022-06-14 12:00:08		82.19	42.72	57.32
6	2022-06-14 12:29:08		81.74	42.18	56.57
7	2022-06-14 12:58:08		82.94	41.91	57.46
8	2022-06-14 13:27:08		83.40	40.98	57.25
9	2022-06-14 13:56:08		83.71	39.99	56.85
10	2022-06-14 14:25:08		84.10	40.96	57.87
11	2022-06-14 14:54:08		84.56	40.96	58.28
12	2022-06-14 15:23:08		84.12	38.98	56.50
13	2022-06-14 15:52:08		83.46	41.18	57.44
14	2022-06-14 16:21:08		82.83	40.85	56.65
15	2022-06-14 16:50:08		81.28	40.85	55.26
16	2022-06-14 17:19:08		79.79	42.29	54.89
17	2022-06-14 17:48:08		78.06	44.27	54.58
18	2022-06-14 18:17:08		76.61	46.43	54.57
19	2022-06-14 18:46:08		75.16	45.86	52.91
20	2022-06-14 19:15:08		73.93	48.57	53.36
21	2022-06-14 19:44:08		72.44	51.35	53.51
22	2022-06-14 20:13:08		69.97	54.93	53.06
23	2022-06-14 20:42:08		68.02	57.98	52.72
24	2022-06-14 21:11:08		65.53	59.61	51.13
25	2022-06-14 21:40:08		64.35	63.05	51.54
26	2022-06-14 22:09:08		63.85	64.24	51.57
27	2022-06-14 22:38:08		63.19	63.86	50.79
28	2022-06-14 23:07:08		62.32	64.90	50.40
29	2022-06-14 23:36:08		61.34	64.31	49.22
30	2022-06-15 0:05:08		60.64	64.20	48.51
31	2022-06-15 0:34:08		59.72	65.53	48.18
32	2022-06-15 1:03:08		59.66	64.53	47.72
33	2022-06-15 1:32:08		61.13	61.06	47.63
34	2022-06-15 2:01:08		60.43	61.88	47.33
35	2022-06-15 2:30:08		60.26	62.63	47.49
36	2022-06-15 2:59:08		60.64	62.92	47.98
37	2022-06-15 3:28:08		59.97	64.98	48.20
38	2022-06-15 3:57:08		59.95	62.51	47.14
39	2022-06-15 4:26:08		59.54	62.58	46.79
40	2022-06-15 4:55:08		59.18	62.12	46.25
41	2022-06-15 5:24:08		58.66	64.27	46.66
42	2022-06-15 5:53:08		57.83	66.34	46.70
43	2022-06-15 6:22:08		58.23	66.58	47.19
44	2022-06-15 6:51:08		59.76	66.28	48.52
45	2022-06-15 7:20:08		61.90	64.59	49.87
46	2022-06-15 7:49:08		64.43	60.40	50.45
47	2022-06-15 8:18:08		68.13	58.37	53.01
48	2022-06-15 8:47:08		71.36	54.09	53.93

49	2022-06-15 9:16:08	74.23	51.40	55.19
50	2022-06-15 9:45:08	76.71	48.75	56.01
51	2022-06-15 10:14:08	79.39	46.67	57.25
52	2022-06-15 10:43:08	80.95	47.40	59.10
53	2022-06-15 11:12:08	81.59	47.53	59.76
54	2022-06-15 11:41:08	82.77	45.10	59.36
55	2022-06-15 12:10:08	84.43	42.42	59.14
56	2022-06-15 12:39:08	86.32	44.56	62.23
57	2022-06-15 13:08:08	87.69	43.52	62.80
58	2022-06-15 13:37:08	88.83	43.57	63.85
59	2022-06-15 14:06:08	90.28	41.31	63.63
60	2022-06-15 14:35:08	91.11	39.92	63.39
61	2022-06-15 15:04:08	91.42	40.97	64.41
62	2022-06-15 15:33:08	90.18	42.57	64.40
63	2022-06-15 16:02:08	89.29	44.37	64.80
64	2022-06-15 16:31:08	88.29	44.67	64.08
65	2022-06-15 17:00:08	86.78	46.34	63.77
66	2022-06-15 17:29:08	86.32	46.05	63.17
67	2022-06-15 17:58:08	84.62	46.59	61.96
68	2022-06-15 18:27:08	81.24	49.39	60.52
69	2022-06-15 18:56:08	78.08	50.96	58.49
70	2022-06-15 19:25:08	75.43	53.84	57.59
71	2022-06-15 19:54:08	72.50	56.88	56.38
72	2022-06-15 20:23:08	70.91	59.95	56.35
73	2022-06-15 20:52:08	70.64	60.08	56.16
74	2022-06-15 21:21:08	71.36	60.24	56.90
75	2022-06-15 21:50:08	70.72	61.27	56.77
76	2022-06-15 22:19:08	70.35	62.36	56.91
77	2022-06-15 22:48:08	69.56	63.56	56.70
78	2022-06-15 23:17:08	68.75	64.16	56.19
79	2022-06-15 23:46:08	71.61	60.76	57.37
80	2022-06-16 0:15:08	71.03	59.37	56.19
81	2022-06-16 0:44:08	71.09	59.68	56.39
82	2022-06-16 1:13:08	71.03	58.56	55.81
83	2022-06-16 1:42:08	71.24	58.79	56.12
84	2022-06-16 2:11:08	71.22	58.22	55.83
85	2022-06-16 2:40:08	71.17	56.95	55.17
86	2022-06-16 3:09:08	70.89	55.70	54.30
87	2022-06-16 3:38:08	70.76	54.38	53.53
88	2022-06-16 4:07:08	71.32	53.68	53.69
89	2022-06-16 4:36:08	70.82	54.50	53.64
90	2022-06-16 5:05:08	70.95	54.11	53.57
91	2022-06-16 5:34:08	70.68	55.52	54.02
92	2022-06-16 6:03:08	70.95	55.89	54.45
93	2022-06-16 6:32:08	71.01	54.48	53.81
94	2022-06-16 7:01:08	70.55	55.88	54.07
95	2022-06-16 7:30:08	70.84	56.58	54.68
96	2022-06-16 7:59:08	71.47	56.13	55.05
97	2022-06-16 8:28:08	73.15	55.35	56.23
98	2022-06-16 8:57:08	72.00	58.55	56.71
99	2022-06-16 9:26:08	75.26	55.95	58.49

100	2022-06-16 9:55:08	75.43	55.94	58.65
101	2022-06-16 10:24:08	77.90	54.89	60.41
102	2022-06-16 10:53:08	80.03	53.59	61.71
103	2022-06-16 11:22:08	81.22	51.98	61.95
104	2022-06-16 11:51:08	82.59	49.97	62.09
105	2022-06-16 12:20:08	83.29	47.91	61.54
106	2022-06-16 12:49:08	83.83	45.74	60.72
107	2022-06-16 13:18:08	84.51	46.31	61.68
108	2022-06-16 13:47:08	85.26	46.92	62.73
109	2022-06-16 14:16:08	87.09	45.33	63.42
110	2022-06-16 14:45:08	88.25	42.90	62.89
111	2022-06-16 15:14:08	87.81	43.45	62.85
112	2022-06-16 15:43:08	86.88	45.52	63.34
113	2022-06-16 16:12:08	85.12	46.24	62.20
114	2022-06-16 16:41:08	83.35	47.05	61.07
115	2022-06-16 17:10:08	81.88	47.86	60.22
116	2022-06-16 17:39:08	81.30	47.56	59.51
117	2022-06-16 18:08:08	77.48	49.21	56.97
118	2022-06-16 18:37:08	72.92	53.38	55.02
119	2022-06-16 19:06:08	70.03	56.20	53.74
120	2022-06-16 19:35:08	70.14	57.44	54.45
121	2022-06-16 20:04:08	70.12	58.32	54.85
122	2022-06-16 20:33:08	70.14	57.32	54.39
123	2022-06-16 21:02:08	68.64	62.22	55.23
124	2022-06-16 21:31:08	71.55	58.25	56.15
125	2022-06-16 22:00:08	71.05	57.85	55.49
126	2022-06-16 22:29:08	71.36	58.10	55.90
127	2022-06-16 22:58:08	71.42	58.79	56.28
128	2022-06-16 23:27:08	71.26	58.47	55.99
129	2022-06-16 23:56:08	71.05	58.54	55.82
130	2022-06-17 0:25:08	70.82	58.25	55.46
131	2022-06-17 0:54:08	71.20	57.93	55.68
132	2022-06-17 1:23:08	70.88	57.66	55.24
133	2022-06-17 1:52:08	70.86	58.21	55.48
134	2022-06-17 2:21:08	70.61	57.09	54.71
135	2022-06-17 2:50:08	70.61	57.06	54.70
136	2022-06-17 3:19:08	71.01	56.76	54.93
137	2022-06-17 3:48:08	70.72	56.70	54.63
138	2022-06-17 4:17:08	71.47	55.51	54.75
139	2022-06-17 4:46:08	70.78	54.89	53.80
140	2022-06-17 5:15:08	70.55	55.62	53.94
141	2022-06-17 5:44:08	71.42	54.20	54.04
142	2022-06-17 6:13:08	71.15	54.98	54.18
143	2022-06-17 6:42:08	70.26	54.41	53.07
144	2022-06-17 7:11:08	70.22	53.91	52.79
145	2022-06-17 7:40:08	70.08	54.62	53.02
146	2022-06-17 8:09:08	70.86	52.78	52.80
147	2022-06-17 8:38:08	70.95	52.48	52.73
148	2022-06-17 9:07:08	71.34	52.48	53.09
149	2022-06-17 9:36:08	70.45	54.76	53.43
150	2022-06-17 10:05:08	69.66	56.02	53.31

151	2022-06-17 10:34:08	71.18	52.87	53.15
152	2022-06-17 11:03:08	72.73	52.83	54.56
153	2022-06-17 11:32:08	74.39	51.05	55.15
154	2022-06-17 12:01:08	75.37	49.20	55.04
155	2022-06-17 12:30:08	76.24	50.01	56.29
156	2022-06-17 12:59:08	77.71	48.20	56.61
157	2022-06-17 13:28:08	77.83	48.99	57.17
158	2022-06-17 13:57:08	79.52	48.11	58.22
159	2022-06-17 14:26:08	79.00	47.38	57.31
160	2022-06-17 14:55:08	79.89	46.74	57.74
161	2022-06-17 15:24:08	78.33	47.84	56.97
162	2022-06-17 15:53:08	77.69	49.59	57.38
163	2022-06-17 16:22:08	76.49	50.52	56.80
164	2022-06-17 16:51:08	75.53	51.80	56.60
165	2022-06-17 17:20:08	74.56	52.99	56.33
166	2022-06-17 17:49:08	74.35	53.69	56.50
167	2022-06-17 18:18:08	72.59	56.20	56.13
168	2022-06-17 18:47:08	69.41	60.09	55.00
169	2022-06-17 19:16:08	69.37	60.31	55.06
170	2022-06-17 19:45:08	69.97	60.37	55.65
171	2022-06-17 20:14:08	70.24	61.32	56.34
172	2022-06-17 20:43:08	68.91	62.91	55.79
173	2022-06-17 21:12:08	70.99	60.16	56.52
174	2022-06-17 21:41:08	71.09	59.49	56.30
175	2022-06-17 22:10:08	71.03	59.27	56.14
176	2022-06-17 22:39:08	70.76	58.88	55.71
177	2022-06-17 23:08:08	71.09	57.99	55.60
178	2022-06-17 23:37:08	71.03	58.64	55.85
179	2022-06-18 0:06:08	71.45	58.62	56.24
180	2022-06-18 0:35:08	71.42	59.07	56.41
181	2022-06-18 1:04:08	70.68	57.83	55.14
182	2022-06-18 1:33:08	70.57	58.37	55.29
183	2022-06-18 2:02:08	71.22	58.53	55.98
184	2022-06-18 2:31:08	71.13	58.39	55.82
185	2022-06-18 3:00:08	70.70	58.24	55.35
186	2022-06-18 3:29:08	71.18	56.62	55.03
187	2022-06-18 3:58:08	70.70	58.16	55.31
188	2022-06-18 4:27:08	71.05	57.73	55.43
189	2022-06-18 4:56:08	71.42	56.91	55.38
190	2022-06-18 5:25:08	71.44	57.05	55.47
191	2022-06-18 5:54:08	71.34	56.82	55.27
192	2022-06-18 6:23:08	70.41	56.67	54.33
193	2022-06-18 6:52:08	70.05	57.31	54.30
194	2022-06-18 7:21:08	70.22	58.00	54.78
195	2022-06-18 7:50:08	70.88	56.98	54.91
196	2022-06-18 8:19:08	71.45	55.20	54.58
197	2022-06-18 8:48:08	70.14	58.61	55.00
198	2022-06-18 9:17:08	71.34	58.63	56.13
199	2022-06-18 9:46:08	69.66	61.54	55.89
200	2022-06-18 10:15:08	70.86	60.46	56.53
201	2022-06-18 10:44:08	72.44	58.46	57.08

202	2022-06-18 11:13:08	74.29	55.95	57.59
203	2022-06-18 11:42:08	76.03	54.92	58.69
204	2022-06-18 12:11:08	75.05	56.85	58.74
205	2022-06-18 12:40:08	77.25	52.04	58.32
206	2022-06-18 13:09:08	78.44	50.55	58.61
207	2022-06-18 13:38:08	77.69	50.33	57.79
208	2022-06-18 14:07:08	71.78	56.27	55.41
209	2022-06-18 14:36:08	79.27	49.40	58.73
210	2022-06-18 15:05:08	81.74	48.95	60.73
211	2022-06-18 15:34:08	80.66	47.30	58.78
212	2022-06-18 16:03:08	80.70	47.21	58.76
213	2022-06-18 16:32:08	79.23	50.45	59.28
214	2022-06-18 17:01:08	76.88	52.94	58.45
215	2022-06-18 17:30:08	76.98	52.24	58.17
216	2022-06-18 17:59:08	75.84	53.37	57.71
217	2022-06-18 18:28:08	73.27	56.48	56.90
218	2022-06-18 18:57:08	71.55	58.56	56.30
219	2022-06-18 19:26:08	69.89	60.89	55.82
220	2022-06-18 19:55:08	70.39	60.62	56.17
221	2022-06-18 20:24:08	70.80	61.38	56.89
222	2022-06-18 20:53:08	70.45	62.61	57.12
223	2022-06-18 21:22:08	69.39	64.47	56.93
224	2022-06-18 21:51:08	70.99	60.32	56.59
225	2022-06-18 22:20:08	71.59	58.69	56.39
226	2022-06-18 22:49:08	70.99	57.10	55.08
227	2022-06-18 23:18:08	71.17	57.72	55.54
228	2022-06-18 23:47:08	71.15	57.28	55.31
229	2022-06-19 0:16:08	70.82	57.30	55.01
230	2022-06-19 0:45:08	70.95	56.68	54.84
231	2022-06-19 1:14:08	70.99	57.52	55.28
232	2022-06-19 1:43:08	71.40	56.82	55.32
233	2022-06-19 2:12:08	70.80	57.71	55.19
234	2022-06-19 2:41:08	71.11	57.62	55.43
235	2022-06-19 3:10:08	70.80	57.10	54.90
236	2022-06-19 3:39:08	70.55	56.97	54.60
237	2022-06-19 4:08:08	70.61	56.28	54.32
238	2022-06-19 4:37:08	70.88	57.12	54.98
239	2022-06-19 5:06:08	70.84	57.13	54.95
240	2022-06-19 5:35:08	70.72	56.55	54.56
241	2022-06-19 6:04:08	70.72	56.53	54.55
242	2022-06-19 6:33:08	71.15	55.89	54.63
243	2022-06-19 7:02:08	70.26	57.62	54.64
244	2022-06-19 7:31:08	70.84	57.70	55.22
245	2022-06-19 8:00:08	71.53	57.60	55.82
246	2022-06-19 8:29:08	72.73	55.86	56.10
247	2022-06-19 8:58:08	70.86	58.69	55.71
248	2022-06-19 9:27:08	73.52	55.27	56.54
249	2022-06-19 9:56:08	73.21	56.19	56.71
250	2022-06-19 10:25:08	74.97	55.34	57.92
251	2022-06-19 10:54:08	76.94	52.91	58.49
252	2022-06-19 11:23:08	78.42	51.45	59.08

253	2022-06-19 11:52:08	80.35	49.79	59.94
254	2022-06-19 12:21:08	81.63	47.65	59.87
255	2022-06-19 12:50:08	82.17	46.17	59.47
256	2022-06-19 13:19:08	83.19	46.59	60.66
257	2022-06-19 13:48:08	83.87	45.98	60.90
258	2022-06-19 14:17:08	85.41	44.22	61.19
259	2022-06-19 14:46:08	86.55	42.02	60.78
260	2022-06-19 15:15:08	86.32	41.50	60.22
261	2022-06-19 15:44:08	84.89	42.77	59.78
262	2022-06-19 16:13:08	83.93	44.10	59.78
263	2022-06-19 16:42:08	83.46	45.18	60.04
264	2022-06-19 17:11:08	82.44	44.98	58.99
265	2022-06-19 17:40:08	82.25	43.43	57.83
266	2022-06-19 18:09:08	80.39	46.85	58.26
267	2022-06-19 18:38:08	77.63	48.84	56.90
268	2022-06-19 19:07:08	76.49	56.25	59.80
269	2022-06-19 19:36:08	74.68	58.72	59.31
270	2022-06-19 20:05:08	72.11	62.55	58.66
271	2022-06-19 20:34:08	70.49	64.86	58.14
272	2022-06-19 21:03:08	70.66	65.44	58.55
273	2022-06-19 21:32:08	70.99	64.74	58.56
274	2022-06-19 22:01:08	71.18	64.81	58.77
275	2022-06-19 22:30:08	70.70	65.22	58.49
276	2022-06-19 22:59:08	69.99	66.31	58.28
277	2022-06-19 23:28:08	69.27	67.64	58.15
278	2022-06-19 23:57:08	71.26	64.32	58.63
279	2022-06-20 0:26:08	71.57	62.06	57.93
280	2022-06-20 0:55:08	70.99	62.45	57.56
281	2022-06-20 1:24:08	71.36	62.82	58.07
282	2022-06-20 1:53:08	71.15	61.32	57.19
283	2022-06-20 2:22:08	70.97	61.68	57.19
284	2022-06-20 2:51:08	70.88	61.07	56.83
285	2022-06-20 3:20:08	71.15	61.33	57.20
286	2022-06-20 3:49:08	71.22	61.59	57.39
287	2022-06-20 4:18:08	70.95	59.46	56.16
288	2022-06-20 4:47:08	70.91	58.84	55.83
289	2022-06-20 5:16:08	70.78	58.64	55.61
290	2022-06-20 5:45:08	71.45	57.85	55.87
291	2022-06-20 6:14:08	70.76	57.24	54.93
292	2022-06-20 6:43:08	71.20	56.36	54.92
293	2022-06-20 7:12:08	70.97	58.25	55.61
294	2022-06-20 7:41:08	72.05	56.55	55.80
295	2022-06-20 8:10:08	70.78	57.96	55.29
296	2022-06-20 8:39:08	71.13	58.34	55.79
297	2022-06-20 9:08:08	73.79	56.16	57.23
298	2022-06-20 9:37:08	75.93	53.78	58.02
299	2022-06-20 10:06:08	77.21	54.31	59.47
300	2022-06-20 10:35:08	79.74	51.77	60.47
301	2022-06-20 11:04:08	81.45	49.99	61.06
302	2022-06-20 11:33:08	83.54	48.63	62.19
303	2022-06-20 12:02:08	85.14	47.03	62.70

304	2022-06-20 12:31:08	86.01	45.33	62.44
305	2022-06-20 13:00:08	87.09	46.20	63.96
306	2022-06-20 13:29:08	87.88	42.53	62.31
307	2022-06-20 13:58:08	88.98	42.85	63.52
308	2022-06-20 14:27:08	90.16	40.63	63.06
309	2022-06-20 14:56:08	90.30	39.63	62.47
310	2022-06-20 15:25:08	89.16	39.85	61.61
311	2022-06-20 15:54:08	88.06	41.05	61.46
312	2022-06-20 16:23:08	87.03	42.29	61.39
313	2022-06-20 16:52:08	86.07	41.62	60.08
314	2022-06-20 17:21:08	85.55	40.99	59.18
315	2022-06-20 17:50:08	84.72	40.88	58.36
316	2022-06-20 18:19:08	82.44	42.75	57.57
317	2022-06-20 18:48:08	79.89	43.89	56.00
318	2022-06-20 19:17:08	77.96	45.63	55.32
319	2022-06-20 19:46:08	75.99	51.37	56.79
320	2022-06-20 20:15:08	73.50	55.70	56.74
321	2022-06-20 20:44:08	70.51	61.55	56.70
322	2022-06-20 21:13:08	70.53	62.42	57.11
323	2022-06-20 21:42:08	70.76	62.23	57.24
324	2022-06-20 22:11:08	71.20	62.02	57.56
325	2022-06-20 22:40:08	70.66	60.08	56.17
326	2022-06-20 23:09:08	71.47	59.80	56.81
327	2022-06-20 23:38:08	70.95	60.94	56.84
328	2022-06-21 0:07:08	70.51	62.06	56.93
329	2022-06-21 0:36:08	69.89	63.30	56.89
330	2022-06-21 1:05:08	69.85	61.74	56.16
331	2022-06-21 1:34:08	70.45	59.72	55.81
332	2022-06-21 2:03:08	70.08	60.06	55.62
333	2022-06-21 2:32:08	69.54	60.05	55.11
334	2022-06-21 3:01:08	69.50	58.61	54.40
335	2022-06-21 3:30:08	70.49	63.07	57.36
336	2022-06-21 3:59:08	71.49	57.07	55.53
337	2022-06-21 4:28:08	71.20	56.53	55.00
338	2022-06-21 4:57:08	71.26	55.94	54.77
339	2022-06-21 5:26:08	71.17	55.65	54.53
340	2022-06-21 5:55:08	71.20	55.18	54.33
341	2022-06-21 6:24:08	71.09	54.72	54.00
342	2022-06-21 6:53:08	71.05	55.19	54.20
343	2022-06-21 7:22:08	73.00	54.87	55.85
344	2022-06-21 7:51:08	73.25	55.45	56.37
345	2022-06-21 8:20:08	75.03	55.30	57.95
346	2022-06-21 8:49:08	76.18	55.55	59.16
347	2022-06-21 9:18:08	80.12	53.19	61.58
348	2022-06-21 9:47:08	80.82	52.65	61.94
349	2022-06-21 10:16:08	83.15	50.73	63.04
350	2022-06-21 10:45:08	85.26	49.15	64.06
351	2022-06-21 11:14:08	87.07	45.89	63.75
352	2022-06-21 11:43:08	88.64	43.81	63.84
353	2022-06-21 12:12:08	89.93	42.51	64.14
354	2022-06-21 12:41:08	91.13	40.68	63.95



355	2022-06-21 13:10:08	92.15	40.09	64.45
356	2022-06-21 13:39:08	92.96	39.04	64.40
357	2022-06-21 14:08:08	94.52	39.01	65.77
358	2022-06-21 14:37:08	96.03	37.42	65.90
359	2022-06-21 15:06:08	96.03	37.98	66.33
360	2022-06-21 15:35:08	95.30	37.52	65.33
361	2022-06-21 16:04:08	94.10	39.23	65.56
362	2022-06-21 16:33:08	93.02	39.65	64.90
363	2022-06-21 17:02:08	91.90	40.90	64.80
364	2022-06-21 17:31:08	91.40	41.16	64.53
365	2022-06-21 18:00:08	89.29	41.52	62.90
366	2022-06-21 18:29:08	86.38	44.38	62.17
367	2022-06-21 18:58:08	84.02	46.98	61.65
368	2022-06-21 19:27:08	82.54	49.84	61.96
369	2022-06-21 19:56:08	80.18	54.38	62.27
370	2022-06-21 20:25:08	76.94	61.68	62.82
371	2022-06-21 20:54:08	75.37	63.23	62.05
372	2022-06-21 21:23:08	73.93	66.03	61.90
373	2022-06-21 21:52:08	73.00	66.94	61.41
374	2022-06-21 22:21:08	72.15	67.70	60.92
375	2022-06-21 22:50:08	70.30	66.11	58.49
376	2022-06-21 23:19:08	71.22	65.71	59.19
377	2022-06-21 23:48:08	71.07	64.07	58.34
378	2022-06-22 0:17:08	70.99	62.01	57.36
379	2022-06-22 0:46:08	70.70	58.86	55.64
380	2022-06-22 1:15:08	70.88	55.62	54.25
381	2022-06-22 1:44:08	71.28	56.36	54.99
382	2022-06-22 2:13:08	71.30	55.50	54.58
383	2022-06-22 2:42:08	71.36	58.27	55.98
384	2022-06-22 3:11:08	71.24	58.69	56.07
385	2022-06-22 3:40:08	71.22	58.58	56.00
386	2022-06-22 4:09:08	70.61	61.03	56.55
387	2022-06-22 4:38:08	69.62	63.38	56.67
388	2022-06-22 5:07:08	68.87	65.34	56.80
389	2022-06-22 5:36:08	68.25	66.39	56.66
390	2022-06-22 6:05:08	68.52	65.02	56.34
391	2022-06-22 6:34:08	70.20	62.89	57.00
392	2022-06-22 7:03:08	69.87	61.44	56.05
393	2022-06-22 7:32:08	71.78	60.82	57.57
394	2022-06-22 8:01:08	74.76	57.65	58.86
395	2022-06-22 8:30:08	76.65	56.24	59.93
396	2022-06-22 8:59:08	77.48	56.01	60.59
397	2022-06-22 9:28:08	80.16	55.75	62.96
398	2022-06-22 9:57:08	80.76	56.30	63.80
399	2022-06-22 10:26:08	81.03	55.07	63.41
400	2022-06-22 10:55:08	83.69	55.01	65.86
401	2022-06-22 11:24:08	86.22	49.59	65.20
402	2022-06-22 11:53:08	88.04	49.03	66.53
403	2022-06-22 12:22:08	89.79	48.93	68.08
404	2022-06-22 12:51:08	89.95	46.57	66.78
405	2022-06-22 13:20:08	91.86	44.38	67.12

406	2022-06-22 13:49:08	92.96	43.25	67.36
407	2022-06-22 14:18:08	93.77	42.75	67.75
408	2022-06-22 14:47:08	95.37	41.81	68.53
409	2022-06-22 15:16:08	93.19	43.91	68.01
410	2022-06-22 15:45:08	93.40	45.40	69.17
411	2022-06-22 16:14:08	92.25	45.88	68.43
412	2022-06-22 16:43:08	89.27	49.99	68.23
413	2022-06-22 17:12:08	88.44	51.03	68.06
414	2022-06-22 17:41:08	87.52	52.49	68.03
415	2022-06-22 18:10:08	85.66	54.45	67.39
416	2022-06-22 18:39:08	82.30	60.85	67.48
417	2022-06-22 19:08:08	80.82	62.17	66.70
418	2022-06-22 19:37:08	79.43	58.01	63.41
419	2022-06-22 20:06:08	77.48	59.60	62.35
420	2022-06-22 20:35:08	75.37	61.45	61.24
421	2022-06-22 21:04:08	73.98	64.02	61.08
422	2022-06-22 21:33:08	73.50	66.77	61.82
423	2022-06-22 22:02:08	72.84	66.65	61.14
424	2022-06-22 22:31:08	71.65	67.77	60.47
425	2022-06-22 23:00:08	70.89	67.61	59.68
426	2022-06-22 23:29:08	70.72	67.19	59.34
427	2022-06-22 23:58:08	70.82	65.48	58.71
428	2022-06-23 0:27:08	71.07	62.05	57.45
429	2022-06-23 0:56:08	71.36	61.43	57.44
430	2022-06-23 1:25:08	71.38	61.80	57.63
431	2022-06-23 1:54:08	70.53	63.00	57.36
432	2022-06-23 2:23:08	71.11	64.07	58.38
433	2022-06-23 2:52:08	71.05	64.59	58.55
434	2022-06-23 3:21:08	70.72	65.10	58.46
435	2022-06-23 3:50:08	70.82	66.58	59.18
436	2022-06-23 4:19:08	71.40	65.54	59.29
437	2022-06-23 4:48:08	70.80	66.80	59.26
438	2022-06-23 5:17:08	70.86	66.29	59.09
439	2022-06-23 5:46:08	71.47	66.80	59.90
440	2022-06-23 6:15:08	71.59	67.22	60.18
441	2022-06-23 6:44:08	70.82	68.35	59.92
442	2022-06-23 7:13:08	70.18	69.82	59.90
443	2022-06-23 7:42:08	73.42	66.32	61.55
444	2022-06-23 8:11:08	73.25	65.93	61.22
445	2022-06-23 8:40:08	72.34	66.79	60.72
446	2022-06-23 9:09:08	76.30	62.73	62.69
447	2022-06-23 9:38:08	80.97	57.79	64.74
448	2022-06-23 10:07:08	83.04	54.25	64.85
449	2022-06-23 10:36:08	85.12	51.22	65.12
450	2022-06-23 11:05:08	87.07	50.49	66.50
451	2022-06-23 11:34:08	88.64	49.31	67.24
452	2022-06-23 12:03:08	89.99	50.08	68.93
453	2022-06-23 12:32:08	90.97	48.04	68.62
454	2022-06-23 13:01:08	92.27	45.99	68.52
455	2022-06-23 13:30:08	92.59	44.11	67.60
456	2022-06-23 13:59:08	93.60	43.57	68.15

457	2022-06-23 14:28:08	95.24	42.59	68.96
458	2022-06-23 14:57:08	95.68	42.48	69.28
459	2022-06-23 15:26:08	94.81	43.05	68.89
460	2022-06-23 15:55:08	93.96	42.99	68.08
461	2022-06-23 16:24:08	92.92	43.79	67.68
462	2022-06-23 16:53:08	92.01	46.19	68.42
463	2022-06-23 17:22:08	91.65	47.63	68.98
464	2022-06-23 17:51:08	91.22	48.37	69.05
465	2022-06-23 18:20:08	88.77	50.07	67.82
466	2022-06-23 18:49:08	86.22	51.87	66.49
467	2022-06-23 19:18:08	84.02	54.04	65.65
468	2022-06-23 19:47:08	81.09	58.78	65.34
469	2022-06-23 20:16:08	77.94	60.70	63.30
470	2022-06-23 20:45:08	75.12	62.66	61.55
471	2022-06-23 21:14:08	73.44	63.93	60.53
472	2022-06-23 21:43:08	71.57	64.44	58.98
473	2022-06-23 22:12:08	70.86	65.23	58.64
474	2022-06-23 22:41:08	70.57	66.54	58.92
475	2022-06-23 23:10:08	71.13	66.21	59.32
476	2022-06-23 23:39:08	71.22	66.69	59.61
477	2022-06-24 0:08:08	71.45	66.41	59.71
478	2022-06-24 0:37:08	70.80	67.18	59.41
479	2022-06-24 1:06:08	70.49	68.56	59.69
480	2022-06-24 1:35:08	69.76	69.94	59.55
481	2022-06-24 2:04:08	69.25	71.13	59.54
482	2022-06-24 2:33:08	68.50	72.33	59.28
483	2022-06-24 3:02:08	67.79	73.28	58.96
484	2022-06-24 3:31:08	69.33	74.80	61.03
485	2022-06-24 4:00:08	71.69	65.48	59.54
486	2022-06-24 4:29:08	71.15	65.44	59.01
487	2022-06-24 4:58:08	71.15	64.19	58.47
488	2022-06-24 5:27:08	71.47	65.14	59.19
489	2022-06-24 5:56:08	71.32	64.90	58.94
490	2022-06-24 6:25:08	71.38	64.09	58.64
491	2022-06-24 6:54:08	70.61	65.18	58.38
492	2022-06-24 7:23:08	70.34	66.39	58.64
493	2022-06-24 7:52:08	72.40	65.27	60.13
494	2022-06-24 8:21:08	73.56	63.59	60.49
495	2022-06-24 8:50:08	73.95	63.44	60.79
496	2022-06-24 9:19:08	77.73	59.44	62.51
497	2022-06-24 9:48:08	78.67	60.61	63.95
498	2022-06-24 10:17:08	81.42	59.94	66.21
499	2022-06-24 10:46:08	84.16	56.49	67.06
500	2022-06-24 11:15:08	86.17	51.68	66.34
501	2022-06-24 11:44:08	88.58	48.97	66.99
502	2022-06-24 12:13:08	89.97	49.38	68.51
503	2022-06-24 12:42:08	91.42	48.98	69.59
504	2022-06-24 13:11:08	92.63	45.87	68.78
505	2022-06-24 13:40:08	92.90	44.68	68.25
506	2022-06-24 14:09:08	94.20	43.60	68.70
507	2022-06-24 14:38:08	94.76	38.38	65.50

508	2022-06-24 15:07:08	94.58	39.22	65.98
509	2022-06-24 15:36:08	92.90	39.24	64.50
510	2022-06-24 16:05:08	91.88	39.42	63.72
511	2022-06-24 16:34:08	90.70	41.06	63.84
512	2022-06-24 17:03:08	90.05	44.01	65.24
513	2022-06-24 17:32:08	89.78	43.99	64.98
514	2022-06-24 18:01:08	88.96	46.22	65.67
515	2022-06-24 18:30:08	86.42	50.99	66.18
516	2022-06-24 18:59:08	84.72	56.16	67.41
517	2022-06-24 19:28:08	82.32	61.32	67.72
518	2022-06-24 19:57:08	79.78	63.83	66.48
519	2022-06-24 20:26:08	76.80	67.73	65.37
520	2022-06-24 20:55:08	74.87	68.98	64.05
521	2022-06-24 21:24:08	72.92	70.18	62.68
522	2022-06-24 21:53:08	71.07	70.45	61.01
523	2022-06-24 22:22:08	70.99	69.76	60.66
524	2022-06-24 22:51:08	71.20	69.04	60.57
525	2022-06-24 23:20:08	70.91	68.73	60.17
526	2022-06-24 23:49:08	70.70	69.54	60.29
527	2022-06-25 0:18:08	70.08	69.68	59.75
528	2022-06-25 0:47:08	69.23	70.83	59.40
529	2022-06-25 1:16:08	68.42	71.26	58.79
530	2022-06-25 1:45:08	67.73	72.64	58.66
531	2022-06-25 2:14:08	70.06	73.62	61.29
532	2022-06-25 2:43:08	71.01	66.82	59.46
533	2022-06-25 3:12:08	71.53	66.16	59.68
534	2022-06-25 3:41:08	71.15	65.94	59.22
535	2022-06-25 4:10:08	70.91	65.68	58.89
536	2022-06-25 4:39:08	70.91	64.79	58.51
537	2022-06-25 5:08:08	71.09	64.20	58.42
538	2022-06-25 5:37:08	71.26	64.03	58.51
539	2022-06-25 6:06:08	70.72	64.60	58.24
540	2022-06-25 6:35:08	71.51	63.65	58.58
541	2022-06-25 7:04:08	70.68	65.01	58.39
542	2022-06-25 7:33:08	70.86	64.89	58.50
543	2022-06-25 8:02:08	71.78	63.99	58.99
544	2022-06-25 8:31:08	72.96	63.50	59.89
545	2022-06-25 9:00:08	72.57	64.57	59.99
546	2022-06-25 9:29:08	76.17	60.97	61.76
547	2022-06-25 9:58:08	77.01	60.00	62.10
548	2022-06-25 10:27:08	79.76	57.58	63.50
549	2022-06-25 10:56:08	82.23	54.13	64.03
550	2022-06-25 11:25:08	84.72	52.23	65.31
551	2022-06-25 11:54:08	86.40	52.25	66.87
552	2022-06-25 12:23:08	88.46	50.41	67.73
553	2022-06-25 12:52:08	90.12	48.76	68.27
554	2022-06-25 13:21:08	91.30	47.48	68.58
555	2022-06-25 13:50:08	92.50	45.49	68.41
556	2022-06-25 14:19:08	94.56	44.81	69.83
557	2022-06-25 14:48:08	95.35	43.36	69.59
558	2022-06-25 15:17:08	95.39	42.28	68.88

559	2022-06-25 15:46:08	93.50	41.85	66.89
560	2022-06-25 16:15:08	92.25	42.19	66.00
561	2022-06-25 16:44:08	90.84	43.79	65.81
562	2022-06-25 17:13:08	89.60	43.88	64.75
563	2022-06-25 17:42:08	89.23	43.32	64.05
564	2022-06-25 18:11:08	87.21	49.24	65.90
565	2022-06-25 18:40:08	84.29	55.03	66.42
566	2022-06-25 19:09:08	82.36	57.57	65.93
567	2022-06-25 19:38:08	79.78	60.24	64.81
568	2022-06-25 20:07:08	76.11	63.84	63.01
569	2022-06-25 20:36:08	73.04	66.07	61.07
570	2022-06-25 21:05:08	70.80	67.24	59.44
571	2022-06-25 21:34:08	71.03	65.04	58.73
572	2022-06-25 22:03:08	70.88	64.67	58.42
573	2022-06-25 22:32:08	70.68	65.07	58.41
574	2022-06-25 23:01:08	70.49	65.47	58.40
575	2022-06-25 23:30:08	70.66	66.67	59.07
576	2022-06-25 23:59:08	70.16	67.80	59.06
577	2022-06-26 0:28:08	69.35	68.64	58.63
578	2022-06-26 0:57:08	68.40	69.49	58.07
579	2022-06-26 1:26:08	67.57	70.98	57.87
580	2022-06-26 1:55:08	70.76	71.27	61.04
581	2022-06-26 2:24:08	71.44	63.86	58.60
582	2022-06-26 2:53:08	71.26	64.43	58.68
583	2022-06-26 3:22:08	70.82	64.21	58.17
584	2022-06-26 3:51:08	71.53	63.33	58.46
585	2022-06-26 4:20:08	70.70	63.34	57.68
586	2022-06-26 4:49:08	70.95	63.39	57.94
587	2022-06-26 5:18:08	71.42	62.99	58.20
588	2022-06-26 5:47:08	70.78	62.04	57.17
589	2022-06-26 6:16:08	71.15	62.36	57.66
590	2022-06-26 6:45:08	70.84	63.06	57.68
591	2022-06-26 7:14:08	70.49	63.53	57.56
592	2022-06-26 7:43:08	70.64	63.92	57.87
593	2022-06-26 8:12:08	73.29	61.34	59.22
594	2022-06-26 8:41:08	72.61	63.51	59.56
595	2022-06-26 9:10:08	75.59	61.10	61.28
596	2022-06-26 9:39:08	77.05	60.57	62.41
597	2022-06-26 10:08:08	78.46	58.90	62.94
598	2022-06-26 10:37:08	81.36	56.75	64.58
599	2022-06-26 11:06:08	83.93	56.55	66.87
600	2022-06-26 11:35:08	85.99	53.68	67.28
601	2022-06-26 12:04:08	87.98	53.66	69.10
602	2022-06-26 12:33:08	89.64	52.05	69.74
603	2022-06-26 13:02:08	90.88	49.68	69.51
604	2022-06-26 13:31:08	91.86	46.54	68.50
605	2022-06-26 14:00:08	92.83	44.67	68.18
606	2022-06-26 14:29:08	93.81	42.32	67.49
607	2022-06-26 14:58:08	94.23	41.62	67.38
608	2022-06-26 15:27:08	92.79	40.37	65.21
609	2022-06-26 15:56:08	92.56	41.21	65.60

610	2022-06-26 16:25:08	91.51	43.46	66.20
611	2022-06-26 16:54:08	91.05	44.19	66.26
612	2022-06-26 17:23:08	90.57	44.59	66.09
613	2022-06-26 17:52:08	90.28	45.87	66.64
614	2022-06-26 18:21:08	87.94	48.52	66.14
615	2022-06-26 18:50:08	85.86	52.91	66.73
616	2022-06-26 19:19:08	84.54	57.71	68.04
617	2022-06-26 19:48:08	81.96	60.97	67.21
618	2022-06-26 20:17:08	78.40	65.29	65.83
619	2022-06-26 20:46:08	75.64	67.23	64.05
620	2022-06-26 21:15:08	72.57	67.36	61.18
621	2022-06-26 21:44:08	70.35	68.64	59.59
622	2022-06-26 22:13:08	70.72	68.37	59.83
623	2022-06-26 22:42:08	71.30	68.29	60.35
624	2022-06-26 23:11:08	70.97	69.05	60.35
625	2022-06-26 23:40:08	70.55	69.37	60.07
626	2022-06-27 0:09:08	69.62	71.09	59.87
627	2022-06-27 0:38:08	68.71	71.95	59.34
628	2022-06-27 1:07:08	67.96	72.31	58.76
629	2022-06-27 1:36:08	68.42	74.63	60.09
630	2022-06-27 2:05:08	70.97	66.86	59.44
631	2022-06-27 2:34:08	70.84	65.36	58.68
632	2022-06-27 3:03:08	70.78	65.07	58.50
633	2022-06-27 3:32:08	70.82	64.21	58.16
634	2022-06-27 4:01:08	70.66	63.92	57.89
635	2022-06-27 4:30:08	70.72	63.38	57.71
636	2022-06-27 4:59:08	71.49	64.00	58.72
637	2022-06-27 5:28:08	70.97	64.19	58.30
638	2022-06-27 5:57:08	70.51	63.74	57.67
639	2022-06-27 6:26:08	70.86	63.07	57.71
640	2022-06-27 6:55:08	70.43	63.89	57.66
641	2022-06-27 7:24:08	70.20	64.82	57.84
642	2022-06-27 7:53:08	71.17	64.16	58.47
643	2022-06-27 8:22:08	72.11	64.90	59.69
644	2022-06-27 8:51:08	71.53	67.50	60.25
645	2022-06-27 9:20:08	75.05	64.29	62.21
646	2022-06-27 9:49:08	76.69	63.60	63.46
647	2022-06-27 10:18:08	78.73	61.76	64.55
648	2022-06-27 10:47:08	80.88	58.39	64.95
649	2022-06-27 11:16:08	83.27	58.08	67.03
650	2022-06-27 11:45:08	85.47	55.41	67.72
651	2022-06-27 12:14:08	87.34	53.08	68.20
652	2022-06-27 12:43:08	89.16	51.39	68.93
653	2022-06-27 13:12:08	90.49	48.63	68.53
654	2022-06-27 13:41:08	91.71	47.64	69.04
655	2022-06-27 14:10:08	94.06	47.48	71.08
656	2022-06-27 14:39:08	95.41	43.63	69.82
657	2022-06-27 15:08:08	95.47	41.91	68.69
658	2022-06-27 15:37:08	94.95	42.18	68.41
659	2022-06-27 16:06:08	94.16	41.04	66.91
660	2022-06-27 16:35:08	93.13	43.04	67.37

661	2022-06-27 17:04:08	92.19	41.16	65.24
662	2022-06-27 17:33:08	91.67	40.80	64.52
663	2022-06-27 18:02:08	89.70	44.45	65.21
664	2022-06-27 18:31:08	86.57	45.71	63.18
665	2022-06-27 19:00:08	85.18	49.82	64.38
666	2022-06-27 19:29:08	83.60	56.79	66.69
667	2022-06-27 19:58:08	80.62	61.20	66.07
668	2022-06-27 20:27:08	77.59	64.19	64.58
669	2022-06-27 20:56:08	74.27	65.90	62.18
670	2022-06-27 21:25:08	71.63	68.14	60.60
671	2022-06-27 21:54:08	70.89	68.37	60.00
672	2022-06-27 22:23:08	70.49	67.46	59.24
673	2022-06-27 22:52:08	70.70	66.53	59.05
674	2022-06-27 23:21:08	71.26	67.48	59.98
675	2022-06-27 23:50:08	70.76	67.90	59.68
676	2022-06-28 0:19:08	70.05	68.46	59.22
677	2022-06-28 0:48:08	69.31	68.93	58.71
678	2022-06-28 1:17:08	68.58	68.76	57.94
679	2022-06-28 1:46:08	67.94	69.22	57.52
680	2022-06-28 2:15:08	68.33	73.83	59.69
681	2022-06-28 2:44:08	71.71	63.67	58.77
682	2022-06-28 3:13:08	71.28	63.87	58.45
683	2022-06-28 3:42:08	70.88	63.60	57.95
684	2022-06-28 4:11:08	71.20	62.56	57.80
685	2022-06-28 4:40:08	71.18	63.28	58.10
686	2022-06-28 5:09:08	70.86	62.82	57.59
687	2022-06-28 5:38:08	71.45	63.49	58.46
688	2022-06-28 6:07:08	71.20	62.57	57.81
689	2022-06-28 6:36:08	71.45	62.64	58.08
690	2022-06-28 7:05:08	70.88	64.11	58.18
691	2022-06-28 7:34:08	71.05	64.92	58.69
692	2022-06-28 8:03:08	73.12	63.99	60.25
693	2022-06-28 8:32:08	73.62	64.72	61.04
694	2022-06-28 9:01:08	75.20	64.35	62.38
695	2022-06-28 9:30:08	79.10	60.73	64.41
696	2022-06-28 9:59:08	79.89	60.01	64.81
697	2022-06-28 10:28:08	82.44	58.36	66.40
698	2022-06-28 10:57:08	84.49	54.79	66.47
699	2022-06-28 11:26:08	86.47	52.43	67.04
700	2022-06-28 11:55:08	88.35	50.43	67.63
701	2022-06-28 12:24:08	89.08	47.23	66.40
702	2022-06-28 12:53:08	90.26	46.47	67.00
703	2022-06-28 13:22:08	90.99	46.53	67.71
704	2022-06-28 13:51:08	92.09	43.97	67.06
705	2022-06-28 14:20:08	93.66	42.50	67.48
706	2022-06-28 14:49:08	94.74	41.08	67.46
707	2022-06-28 15:18:08	94.78	42.64	68.58
708	2022-06-28 15:47:08	93.85	44.12	68.74
709	2022-06-28 16:16:08	92.67	46.70	69.34
710	2022-06-28 16:45:08	91.49	47.99	69.06
711	2022-06-28 17:14:08	90.03	48.93	68.29

712	2022-06-28 17:43:08	89.41	49.28	67.93
713	2022-06-28 18:12:08	87.52	51.02	67.21
714	2022-06-28 18:41:08	84.37	53.10	65.46
715	2022-06-28 19:10:08	81.96	53.56	63.48
716	2022-06-28 19:39:08	78.96	55.75	61.84
717	2022-06-28 20:08:08	75.20	58.77	59.82
718	2022-06-28 20:37:08	72.32	60.24	57.81
719	2022-06-28 21:06:08	70.30	62.02	56.71
720	2022-06-28 21:35:08	71.03	64.08	58.31
721	2022-06-28 22:04:08	70.80	64.48	58.27
722	2022-06-28 22:33:08	70.55	65.19	58.33
723	2022-06-28 23:02:08	70.84	65.34	58.67
724	2022-06-28 23:31:08	70.24	66.50	58.60
725	2022-06-29 0:00:08	69.23	67.28	57.97
726	2022-06-29 0:29:08	68.33	68.63	57.65
727	2022-06-29 0:58:08	67.38	69.85	57.23
728	2022-06-29 1:27:08	71.36	66.75	59.77
729	2022-06-29 1:56:08	71.24	64.68	58.77
730	2022-06-29 2:25:08	71.28	64.61	58.78
731	2022-06-29 2:54:08	71.03	64.62	58.54
732	2022-06-29 3:23:08	70.86	64.59	58.37
733	2022-06-29 3:52:08	71.18	62.77	57.88
734	2022-06-29 4:21:08	71.13	63.96	58.35
735	2022-06-29 4:50:08	70.64	64.01	57.91
736	2022-06-29 5:19:08	71.28	63.72	58.39
737	2022-06-29 5:48:08	70.55	63.44	57.57
738	2022-06-29 6:17:08	71.03	63.16	57.91
739	2022-06-29 6:46:08	70.84	62.65	57.50
740	2022-06-29 7:15:08	70.49	63.84	57.69
741	2022-06-29 7:44:08	70.35	64.22	57.73
742	2022-06-29 8:13:08	72.52	62.85	59.18
743	2022-06-29 8:42:08	72.15	63.29	59.03
744	2022-06-29 9:11:08	74.64	61.41	60.53
745	2022-06-29 9:40:08	75.91	60.66	61.38
746	2022-06-29 10:09:08	77.54	59.03	62.13
747	2022-06-29 10:38:08	79.97	56.38	63.10
748	2022-06-29 11:07:08	81.80	54.27	63.71
749	2022-06-29 11:36:08	84.06	53.89	65.60
750	2022-06-29 12:05:08	85.72	53.75	67.07
751	2022-06-29 12:34:08	86.07	52.83	66.89
752	2022-06-29 13:03:08	86.90	51.95	67.16
753	2022-06-29 13:32:08	87.48	51.01	67.16
754	2022-06-29 14:01:08	88.62	49.69	67.45
755	2022-06-29 14:30:08	90.03	47.24	67.27
756	2022-06-29 14:59:08	90.78	46.67	67.60
757	2022-06-29 15:28:08	89.37	46.30	66.09
758	2022-06-29 15:57:08	88.83	45.52	65.11
759	2022-06-29 16:26:08	87.15	48.11	65.18
760	2022-06-29 16:55:08	86.73	50.15	65.98
761	2022-06-29 17:24:08	86.44	51.93	66.73
762	2022-06-29 17:53:08	85.24	52.90	66.16



763	2022-06-29 18:22:08	82.19	56.09	65.02
764	2022-06-29 18:51:08	79.00	59.43	63.70
765	2022-06-29 19:20:08	76.59	62.31	62.78
766	2022-06-29 19:49:08	73.29	64.77	60.75
767	2022-06-29 20:18:08	70.20	68.28	59.30
768	2022-06-29 20:47:08	70.37	68.29	59.47
769	2022-06-29 21:16:08	71.03	67.51	59.77
770	2022-06-29 21:45:08	70.01	67.79	58.91
771	2022-06-29 22:14:08	69.23	71.00	59.47
772	2022-06-29 22:43:08	70.80	65.04	58.51
773	2022-06-29 23:12:08	71.45	64.01	58.68
774	2022-06-29 23:41:08	70.76	64.05	58.04
775	2022-06-30 0:10:08	70.86	64.03	58.12
776	2022-06-30 0:39:08	70.91	64.10	58.21
777	2022-06-30 1:08:08	71.11	64.07	58.38
778	2022-06-30 1:37:08	71.03	63.50	58.06
779	2022-06-30 2:06:08	71.17	63.66	58.25
780	2022-06-30 2:35:08	70.93	63.59	58.00
781	2022-06-30 3:04:08	70.61	63.00	57.44
782	2022-06-30 3:33:08	71.28	63.51	58.30
783	2022-06-30 4:02:08	71.07	63.53	58.11
784	2022-06-30 4:31:08	70.88	63.36	57.85
785	2022-06-30 5:00:08	70.66	62.15	57.11
786	2022-06-30 5:29:08	71.40	61.75	57.63
787	2022-06-30 5:58:08	71.03	62.46	57.60
788	2022-06-30 6:27:08	71.11	62.20	57.55
789	2022-06-30 6:56:08	70.32	62.69	57.02
790	2022-06-30 7:25:08	70.70	63.05	57.55
791	2022-06-30 7:54:08	70.41	63.92	57.66
792	2022-06-30 8:23:08	72.17	62.51	58.69
793	2022-06-30 8:52:08	70.45	66.01	58.59
794	2022-06-30 9:21:08	72.09	63.34	58.99
795	2022-06-30 9:50:08	72.69	64.51	60.07
796	2022-06-30 10:19:08	74.08	62.97	60.71
797	2022-06-30 10:48:08	75.82	61.62	61.73
798	2022-06-30 11:17:08	77.83	59.64	62.69
799	2022-06-30 11:46:08	79.20	57.62	63.00
800	2022-06-30 12:15:08	80.64	55.64	63.35
801	2022-06-30 12:44:08	81.78	54.54	63.84
802	2022-06-30 13:13:08	82.65	54.02	64.37
803	2022-06-30 13:42:08	83.71	53.46	65.05
804	2022-06-30 14:11:08	85.70	52.56	66.40
805	2022-06-30 14:40:08	87.03	50.74	66.61
806	2022-06-30 15:09:08	87.21	50.12	66.41
807	2022-06-30 15:38:08	86.71	52.03	67.03
808	2022-06-30 16:07:08	86.03	52.89	66.88
809	2022-06-30 16:36:08	84.97	53.62	66.30
810	2022-06-30 17:05:08	84.10	54.32	65.87
811	2022-06-30 17:34:08	84.49	55.76	66.98
812	2022-06-30 18:03:08	82.92	57.18	66.26
813	2022-06-30 18:32:08	80.47	60.80	65.73

814	2022-06-30 19:01:08	77.88	62.30	63.99
815	2022-06-30 19:30:08	75.05	64.85	62.45
816	2022-06-30 19:59:08	71.78	68.62	60.95
817	2022-06-30 20:28:08	70.51	69.71	60.18
818	2022-06-30 20:57:08	70.95	68.93	60.28
819	2022-06-30 21:26:08	71.17	67.92	60.07
820	2022-06-30 21:55:08	70.26	68.19	59.32
821	2022-06-30 22:24:08	69.25	69.22	58.78
822	2022-06-30 22:53:08	71.42	66.15	59.57
823	2022-06-30 23:22:08	70.88	64.82	58.49
824	2022-06-30 23:51:08	70.93	63.70	58.05
825	2022-07-01 0:20:08	71.03	63.06	57.86
826	2022-07-01 0:49:08	70.82	63.73	57.96
827	2022-07-01 1:18:08	71.03	63.54	58.07
828	2022-07-01 1:47:08	71.20	63.69	58.31
829	2022-07-01 2:16:08	71.26	62.32	57.76
830	2022-07-01 2:45:08	71.44	63.25	58.33
831	2022-07-01 3:14:08	71.30	63.08	58.13
832	2022-07-01 3:43:08	70.88	62.97	57.68
833	2022-07-01 4:12:08	70.64	63.14	57.53
834	2022-07-01 4:41:08	70.66	62.86	57.43
835	2022-07-01 5:10:08	70.57	62.38	57.12
836	2022-07-01 5:39:08	70.95	61.55	57.12
837	2022-07-01 6:08:08	70.43	62.19	56.91
838	2022-07-01 6:37:08	71.13	61.26	57.15
839	2022-07-01 7:06:08	70.41	62.87	57.19
840	2022-07-01 7:35:08	70.76	62.91	57.54
841	2022-07-01 8:04:08	71.28	62.82	57.99
842	2022-07-01 8:33:08	71.45	62.78	58.14
843	2022-07-01 9:02:08	69.64	67.28	58.35
844	2022-07-01 9:31:08	72.40	64.09	59.61
845	2022-07-01 10:00:08	73.21	64.97	60.77
846	2022-07-01 10:29:08	75.35	62.70	61.79
847	2022-07-01 10:58:08	78.02	59.83	62.97
848	2022-07-01 11:27:08	80.41	57.96	64.30
849	2022-07-01 11:56:08	81.67	56.08	64.52
850	2022-07-01 12:25:08	82.94	57.46	66.42
851	2022-07-01 12:54:08	84.31	57.05	67.49
852	2022-07-01 13:23:08	84.72	55.22	66.92
853	2022-07-01 13:52:08	86.15	53.25	67.19
854	2022-07-01 14:21:08	87.21	51.39	67.13
855	2022-07-01 14:50:08	88.08	50.56	67.46
856	2022-07-01 15:19:08	87.88	49.96	66.94
857	2022-07-01 15:48:08	87.73	49.25	66.38
858	2022-07-01 16:17:08	85.64	48.95	64.29
859	2022-07-01 16:46:08	84.70	48.78	63.33
860	2022-07-01 17:15:08	84.52	53.24	65.68
861	2022-07-01 17:44:08	85.12	55.11	67.24
862	2022-07-01 18:13:08	83.13	56.59	66.15
863	2022-07-01 18:42:08	79.68	59.06	64.15
864	2022-07-01 19:11:08	77.11	61.17	62.74

865	2022-07-01 19:40:08	74.10	64.16	61.26
866	2022-07-01 20:09:08	70.18	67.94	59.14
867	2022-07-01 20:38:08	70.26	67.87	59.18
868	2022-07-01 21:07:08	71.07	67.09	59.63
869	2022-07-01 21:36:08	70.06	67.74	58.95
870	2022-07-01 22:05:08	69.04	69.88	58.84
871	2022-07-01 22:34:08	70.84	65.35	58.68
872	2022-07-01 23:03:08	70.82	64.00	58.07
873	2022-07-01 23:32:08	71.32	63.07	58.14
874	2022-07-02 0:01:08	70.74	64.05	58.02
875	2022-07-02 0:30:08	71.22	64.07	58.49
876	2022-07-02 0:59:08	70.88	63.03	57.70
877	2022-07-02 1:28:08	70.64	63.92	57.87
878	2022-07-02 1:57:08	70.62	63.81	57.81
879	2022-07-02 2:26:08	70.84	63.69	57.96
880	2022-07-02 2:55:08	70.74	63.68	57.86
881	2022-07-02 3:24:08	70.72	63.25	57.66
882	2022-07-02 3:53:08	70.80	62.27	57.29
883	2022-07-02 4:22:08	71.24	62.38	57.76
884	2022-07-02 4:51:08	70.55	62.67	57.23
885	2022-07-02 5:20:08	70.76	62.75	57.47
886	2022-07-02 5:49:08	71.13	62.21	57.58
887	2022-07-02 6:18:08	70.97	61.84	57.27
888	2022-07-02 6:47:08	70.72	61.94	57.07
889	2022-07-02 7:16:08	70.30	63.09	57.18
890	2022-07-02 7:45:08	70.28	63.40	57.30
891	2022-07-02 8:14:08	71.57	61.96	57.88
892	2022-07-02 8:43:08	70.51	63.50	57.56
893	2022-07-02 9:12:08	70.61	64.75	58.20
894	2022-07-02 9:41:08	71.53	64.32	58.89
895	2022-07-02 10:10:08	72.48	63.30	59.34
896	2022-07-02 10:39:08	74.18	62.48	60.58
897	2022-07-02 11:08:08	75.99	60.74	61.49
898	2022-07-02 11:37:08	76.88	59.36	61.67
899	2022-07-02 12:06:08	78.27	57.67	62.16
900	2022-07-02 12:35:08	79.10	57.42	62.81
901	2022-07-02 13:04:08	80.26	56.30	63.33
902	2022-07-02 13:33:08	81.09	55.25	63.56
903	2022-07-02 14:02:08	82.48	55.00	64.72
904	2022-07-02 14:31:08	83.75	53.13	64.91
905	2022-07-02 15:00:08	84.58	52.59	65.38
906	2022-07-02 15:29:08	84.06	52.68	64.95
907	2022-07-02 15:58:08	83.73	52.66	64.64
908	2022-07-02 16:27:08	82.46	55.06	64.74
909	2022-07-02 16:56:08	81.11	56.57	64.26
910	2022-07-02 17:25:08	80.14	57.27	63.71
911	2022-07-02 17:54:08	78.91	58.28	63.05
912	2022-07-02 18:23:08	75.72	61.98	61.81
913	2022-07-02 18:52:08	72.88	65.89	60.85
914	2022-07-02 19:21:08	71.17	66.98	59.68
915	2022-07-02 19:50:08	70.01	69.03	59.42

916	2022-07-02 20:19:08	70.68	68.22	59.74
917	2022-07-02 20:48:08	69.76	68.38	58.91
918	2022-07-02 21:17:08	69.95	71.95	60.53
919	2022-07-02 21:46:08	71.32	64.40	58.72
920	2022-07-02 22:15:08	71.42	64.63	58.91
921	2022-07-02 22:44:08	70.89	64.85	58.52
922	2022-07-02 23:13:08	71.38	64.59	58.86
923	2022-07-02 23:42:08	70.72	63.95	57.96
924	2022-07-03 0:11:08	70.61	64.65	58.16
925	2022-07-03 0:40:08	70.68	63.34	57.66
926	2022-07-03 1:09:08	71.32	64.06	58.58
927	2022-07-03 1:38:08	70.57	63.37	57.56
928	2022-07-03 2:07:08	70.78	64.00	58.04
929	2022-07-03 2:36:08	70.86	64.08	58.14
930	2022-07-03 3:05:08	71.36	64.12	58.64
931	2022-07-03 3:34:08	70.88	63.40	57.87
932	2022-07-03 4:03:08	70.68	62.99	57.50
933	2022-07-03 4:32:08	70.64	62.27	57.15
934	2022-07-03 5:01:08	71.01	61.46	57.13
935	2022-07-03 5:30:08	71.45	62.43	57.98
936	2022-07-03 5:59:08	71.28	62.17	57.70
937	2022-07-03 6:28:08	70.84	62.09	57.25
938	2022-07-03 6:57:08	70.59	62.93	57.39
939	2022-07-03 7:26:08	70.34	63.37	57.34
940	2022-07-03 7:55:08	70.95	63.29	57.89
941	2022-07-03 8:24:08	70.06	64.79	57.70
942	2022-07-03 8:53:08	69.68	67.33	58.41
943	2022-07-03 9:22:08	69.02	66.40	57.39
944	2022-07-03 9:51:08	69.20	66.66	57.67
945	2022-07-03 10:20:08	71.22	65.87	59.27
946	2022-07-03 10:49:08	71.69	64.84	59.26
947	2022-07-03 11:18:08	74.49	60.98	60.18
948	2022-07-03 11:47:08	75.53	59.97	60.69
949	2022-07-03 12:16:08	73.23	62.99	59.91
950	2022-07-03 12:45:08	71.13	65.49	59.01
951	2022-07-03 13:14:08	74.35	61.80	60.43
952	2022-07-03 13:43:08	76.96	60.25	62.17
953	2022-07-03 14:12:08	79.89	56.52	63.10
954	2022-07-03 14:41:08	81.45	54.57	63.55
955	2022-07-03 15:10:08	82.00	54.31	63.91
956	2022-07-03 15:39:08	81.65	54.89	63.90
957	2022-07-03 16:08:08	81.03	54.18	62.95
958	2022-07-03 16:37:08	79.78	55.83	62.64
959	2022-07-03 17:06:08	78.60	56.47	61.87
960	2022-07-03 17:35:08	78.96	56.72	62.33
961	2022-07-03 18:04:08	77.63	57.36	61.41
962	2022-07-03 18:33:08	74.99	60.88	60.61
963	2022-07-03 19:02:08	72.84	63.05	59.57
964	2022-07-03 19:31:08	70.35	65.10	58.11
965	2022-07-03 20:00:08	70.18	66.53	58.55
966	2022-07-03 20:29:08	71.07	66.11	59.22

967	2022-07-03 20:58:08	70.06	67.16	58.70
968	2022-07-03 21:27:08	68.95	68.31	58.11
969	2022-07-03 21:56:08	71.05	62.99	57.85
970	2022-07-03 22:25:08	71.55	61.49	57.65
971	2022-07-03 22:54:08	70.86	61.41	56.96
972	2022-07-03 23:23:08	71.11	61.93	57.43
973	2022-07-03 23:52:08	70.99	61.85	57.29
974	2022-07-04 0:21:08	70.78	61.79	57.06
975	2022-07-04 0:50:08	70.72	61.33	56.80
976	2022-07-04 1:19:08	71.07	61.45	57.18
977	2022-07-04 1:48:08	71.26	61.47	57.37
978	2022-07-04 2:17:08	71.49	60.47	57.13
979	2022-07-04 2:46:08	71.44	60.40	57.04
980	2022-07-04 3:15:08	71.49	60.42	57.11
981	2022-07-04 3:44:08	71.44	60.82	57.24
982	2022-07-04 4:13:08	71.32	60.88	57.16
983	2022-07-04 4:42:08	70.95	60.99	56.86
984	2022-07-04 5:11:08	70.91	60.71	56.70
985	2022-07-04 5:40:08	70.64	60.69	56.44
986	2022-07-04 6:09:08	70.82	61.07	56.77
987	2022-07-04 6:38:08	71.74	60.62	57.44
988	2022-07-04 7:07:08	70.26	63.77	57.44
989	2022-07-04 7:36:08	70.28	65.20	58.08
990	2022-07-04 8:05:08	72.13	64.16	59.39
991	2022-07-04 8:34:08	71.20	65.94	59.28
992	2022-07-04 9:03:08	69.54	70.70	59.65
993	2022-07-04 9:32:08	75.68	62.21	61.88
994	2022-07-04 10:01:08	76.94	60.92	62.46
995	2022-07-04 10:30:08	77.50	61.38	63.21
996	2022-07-04 10:59:08	79.18	58.49	63.41
997	2022-07-04 11:28:08	80.39	57.55	64.08
998	2022-07-04 11:57:08	82.34	56.20	65.22
999	2022-07-04 12:26:08	83.64	55.76	66.19
1000	2022-07-04 12:55:08	84.78	55.75	67.25
1001	2022-07-04 13:24:08	85.66	55.65	68.02
1002	2022-07-04 13:53:08	86.49	54.35	68.10
1003	2022-07-04 14:22:08	88.58	51.91	68.69
1004	2022-07-04 14:51:08	89.31	52.68	69.80
1005	2022-07-04 15:20:08	88.48	53.53	69.50
1006	2022-07-04 15:49:08	88.35	53.88	69.56
1007	2022-07-04 16:18:08	87.44	54.50	69.06
1008	2022-07-04 16:47:08	86.22	57.07	69.28
1009	2022-07-04 17:16:08	82.73	61.15	68.02
1010	2022-07-04 17:45:08	84.78	58.32	68.56
1011	2022-07-04 18:14:08	83.17	60.04	67.91
1012	2022-07-04 18:43:08	80.66	62.78	66.84
1013	2022-07-04 19:12:08	79.22	64.91	66.43
1014	2022-07-04 19:41:08	77.00	68.24	65.77
1015	2022-07-04 20:10:08	74.23	72.76	64.97
1016	2022-07-04 20:39:08	72.52	74.92	64.15
1017	2022-07-04 21:08:08	71.26	76.43	63.51

1018	2022-07-04 21:37:08	70.82	76.27	63.02
1019	2022-07-04 22:06:08	70.55	76.52	62.85
1020	2022-07-04 22:35:08	71.42	75.70	63.39
1021	2022-07-04 23:04:08	71.15	76.16	63.30
1022	2022-07-04 23:33:08	70.95	76.24	63.14
1023	2022-07-05 0:02:08	70.68	76.63	63.02
1024	2022-07-05 0:31:08	71.40	76.10	63.52
1025	2022-07-05 1:00:08	70.72	76.71	63.09
1026	2022-07-05 1:29:08	71.03	76.54	63.33
1027	2022-07-05 1:58:08	71.36	76.42	63.60
1028	2022-07-05 2:27:08	71.07	77.07	63.56
1029	2022-07-05 2:56:08	71.59	76.66	63.91
1030	2022-07-05 3:25:08	71.51	76.50	63.78
1031	2022-07-05 3:54:08	71.20	76.87	63.62
1032	2022-07-05 4:23:08	70.99	77.39	63.60
1033	2022-07-05 4:52:08	70.72	77.76	63.48
1034	2022-07-05 5:21:08	70.64	78.20	63.56
1035	2022-07-05 5:50:08	70.55	78.55	63.60
1036	2022-07-05 6:19:08	70.86	78.38	63.84
1037	2022-07-05 6:48:08	70.62	78.99	63.83
1038	2022-07-05 7:17:08	70.39	79.65	63.84
1039	2022-07-05 7:46:08	72.11	77.62	64.77
1040	2022-07-05 8:15:08	74.79	74.14	66.05
1041	2022-07-05 8:44:08	76.55	71.35	66.63
1042	2022-07-05 9:13:08	78.71	69.03	67.74
1043	2022-07-05 9:42:08	79.64	67.88	68.14
1044	2022-07-05 10:11:08	79.95	67.70	68.36
1045	2022-07-05 10:40:08	82.61	64.12	69.30
1046	2022-07-05 11:09:08	83.89	61.81	69.42
1047	2022-07-05 11:38:08	84.06	62.33	69.83
1048	2022-07-05 12:07:08	85.62	59.77	70.08
1049	2022-07-05 12:36:08	86.59	57.63	69.91
1050	2022-07-05 13:05:08	88.13	55.78	70.39
1051	2022-07-05 13:34:08	87.98	55.45	70.07
1052	2022-07-05 14:03:08	89.20	54.24	70.54
1053	2022-07-05 14:32:08	89.64	52.56	70.03
1054	2022-07-05 15:01:08	89.79	52.33	70.05
1055	2022-07-05 15:30:08	88.81	53.18	69.61
1056	2022-07-05 15:59:08	88.48	54.27	69.90
1057	2022-07-05 16:28:08	86.49	55.93	68.94
1058	2022-07-05 16:57:08	84.93	56.26	67.66
1059	2022-07-05 17:26:08	84.35	57.37	67.69
1060	2022-07-05 17:55:08	83.56	58.34	67.43
1061	2022-07-05 18:24:08	80.84	61.06	66.20
1062	2022-07-05 18:53:08	78.64	63.79	65.38
1063	2022-07-05 19:22:08	76.82	64.62	64.04
1064	2022-07-05 19:51:08	74.23	67.77	62.93
1065	2022-07-05 20:20:08	71.71	70.89	61.80
1066	2022-07-05 20:49:08	70.55	73.22	61.60
1067	2022-07-05 21:18:08	71.13	72.47	61.87
1068	2022-07-05 21:47:08	70.68	72.43	61.42

1069	2022-07-05 22:16:08	70.68	72.45	61.43
1070	2022-07-05 22:45:08	71.03	72.69	61.86
1071	2022-07-05 23:14:08	70.59	73.63	61.79
1072	2022-07-05 23:43:08	69.99	73.99	61.36
1073	2022-07-06 0:12:08	69.25	74.22	60.74
1074	2022-07-06 0:41:08	71.59	70.36	61.47
1075	2022-07-06 1:10:08	71.18	69.66	60.80
1076	2022-07-06 1:39:08	71.57	68.45	60.68
1077	2022-07-06 2:08:08	71.01	68.99	60.36
1078	2022-07-06 2:37:08	71.26	69.06	60.63
1079	2022-07-06 3:06:08	71.53	69.09	60.90
1080	2022-07-06 3:35:08	70.97	68.27	60.03
1081	2022-07-06 4:04:08	70.95	68.47	60.09
1082	2022-07-06 4:33:08	70.95	68.45	60.09
1083	2022-07-06 5:02:08	71.03	67.80	59.89
1084	2022-07-06 5:31:08	71.36	67.23	59.97
1085	2022-07-06 6:00:08	71.47	68.30	60.52
1086	2022-07-06 6:29:08	71.59	67.82	60.43
1087	2022-07-06 6:58:08	70.95	68.14	59.96
1088	2022-07-06 7:27:08	70.64	69.09	60.05
1089	2022-07-06 7:56:08	71.44	68.32	60.50
1090	2022-07-06 8:25:08	72.79	65.35	60.53
1091	2022-07-06 8:54:08	72.11	67.02	60.60
1092	2022-07-06 9:23:08	75.01	64.34	62.19
1093	2022-07-06 9:52:08	75.03	64.56	62.31
1094	2022-07-06 10:21:08	76.74	63.32	63.38
1095	2022-07-06 10:50:08	78.85	61.24	64.41
1096	2022-07-06 11:19:08	80.01	60.19	65.00
1097	2022-07-06 11:48:08	80.70	58.72	64.95
1098	2022-07-06 12:17:08	82.00	57.65	65.63
1099	2022-07-06 12:46:08	82.75	57.63	66.32
1100	2022-07-06 13:15:08	83.71	56.68	66.74
1101	2022-07-06 13:44:08	83.98	56.63	66.97
1102	2022-07-06 14:13:08	85.37	55.54	67.70
1103	2022-07-06 14:42:08	86.26	53.44	67.40
1104	2022-07-06 15:11:08	86.86	53.11	67.77
1105	2022-07-06 15:40:08	86.18	53.63	67.43
1106	2022-07-06 16:09:08	84.95	55.05	67.04
1107	2022-07-06 16:38:08	83.67	56.10	66.40
1108	2022-07-06 17:07:08	82.77	57.62	66.33
1109	2022-07-06 17:36:08	83.08	57.39	66.50
1110	2022-07-06 18:05:08	81.30	58.71	65.50
1111	2022-07-06 18:34:08	78.29	61.90	64.19
1112	2022-07-06 19:03:08	75.97	64.68	63.26
1113	2022-07-06 19:32:08	73.91	66.86	62.24
1114	2022-07-06 20:01:08	70.89	70.85	61.00
1115	2022-07-06 20:30:08	70.55	71.60	60.96
1116	2022-07-06 20:59:08	71.34	70.98	61.48
1117	2022-07-06 21:28:08	71.09	71.40	61.41
1118	2022-07-06 21:57:08	70.28	72.05	60.88
1119	2022-07-06 22:26:08	69.33	73.43	60.51

1120	2022-07-06 22:55:08	71.11	71.26	61.37
1121	2022-07-06 23:24:08	71.11	69.40	60.62
1122	2022-07-06 23:53:08	71.34	68.40	60.44
1123	2022-07-07 0:22:08	71.18	69.01	60.54
1124	2022-07-07 0:51:08	71.20	67.50	59.93
1125	2022-07-07 1:20:08	70.99	68.18	60.01
1126	2022-07-07 1:49:08	71.30	68.00	60.23
1127	2022-07-07 2:18:08	71.36	67.34	60.01
1128	2022-07-07 2:47:08	71.22	67.27	59.85
1129	2022-07-07 3:16:08	70.82	67.09	59.39
1130	2022-07-07 3:45:08	71.45	66.39	59.71
1131	2022-07-07 4:14:08	71.11	66.55	59.44
1132	2022-07-07 4:43:08	70.74	65.92	58.83
1133	2022-07-07 5:12:08	70.78	65.82	58.82
1134	2022-07-07 5:41:08	71.05	65.96	59.14
1135	2022-07-07 6:10:08	71.15	64.53	58.62
1136	2022-07-07 6:39:08	71.71	63.90	58.87
1137	2022-07-07 7:08:08	70.49	66.89	59.00
1138	2022-07-07 7:37:08	70.80	67.29	59.46
1139	2022-07-07 8:06:08	71.47	66.73	59.87
1140	2022-07-07 8:35:08	72.07	65.98	60.12
1141	2022-07-07 9:04:08	71.03	69.20	60.47
1142	2022-07-07 9:33:08	73.87	66.63	62.10
1143	2022-07-07 10:02:08	75.01	65.55	62.72
1144	2022-07-07 10:31:08	77.63	63.27	64.20
1145	2022-07-07 11:00:08	79.39	60.21	64.43
1146	2022-07-07 11:29:08	80.88	59.30	65.39
1147	2022-07-07 11:58:08	82.54	58.27	66.44
1148	2022-07-07 12:27:08	83.66	56.73	66.71
1149	2022-07-07 12:56:08	85.01	55.73	67.45
1150	2022-07-07 13:25:08	86.03	54.80	67.91
1151	2022-07-07 13:54:08	86.63	52.53	67.24
1152	2022-07-07 14:23:08	88.02	52.38	68.44
1153	2022-07-07 14:52:08	88.75	49.42	67.42
1154	2022-07-07 15:21:08	88.60	50.42	67.85
1155	2022-07-07 15:50:08	88.60	49.79	67.49
1156	2022-07-07 16:19:08	87.40	49.28	66.10
1157	2022-07-07 16:48:08	86.13	51.25	66.06
1158	2022-07-07 17:17:08	85.43	52.05	65.87
1159	2022-07-07 17:46:08	85.39	52.40	66.03
1160	2022-07-07 18:15:08	83.50	55.36	65.86
1161	2022-07-07 18:44:08	80.88	58.81	65.15
1162	2022-07-07 19:13:08	79.00	61.28	64.58
1163	2022-07-07 19:42:08	76.55	63.72	63.38
1164	2022-07-07 20:11:08	73.08	67.68	61.79
1165	2022-07-07 20:40:08	70.82	70.29	60.70
1166	2022-07-07 21:09:08	71.05	69.90	60.77
1167	2022-07-07 21:38:08	71.11	69.95	60.84
1168	2022-07-07 22:07:08	71.22	69.84	60.91
1169	2022-07-07 22:36:08	71.01	69.41	60.53
1170	2022-07-07 23:05:08	70.30	70.43	60.26



1171	2022-07-07 23:34:08	69.49	71.06	59.73
1172	2022-07-08 0:03:08	70.93	69.28	60.41
1173	2022-07-08 0:32:08	71.40	68.27	60.43
1174	2022-07-08 1:01:08	71.24	66.86	59.70
1175	2022-07-08 1:30:08	70.88	67.18	59.49
1176	2022-07-08 1:59:08	70.76	67.49	59.51
1177	2022-07-08 2:28:08	71.17	66.68	59.55
1178	2022-07-08 2:57:08	71.26	66.65	59.63
1179	2022-07-08 3:26:08	71.42	67.46	60.12
1180	2022-07-08 3:55:08	71.15	67.43	59.85
1181	2022-07-08 4:24:08	70.78	67.43	59.50
1182	2022-07-08 4:53:08	71.40	67.51	60.12
1183	2022-07-08 5:22:08	70.82	67.24	59.46
1184	2022-07-08 5:51:08	71.36	66.68	59.74
1185	2022-07-08 6:20:08	71.22	66.91	59.70
1186	2022-07-08 6:49:08	71.38	66.07	59.50
1187	2022-07-08 7:18:08	70.62	67.46	59.36
1188	2022-07-08 7:47:08	70.55	67.46	59.29
1189	2022-07-08 8:16:08	72.96	65.74	60.86
1190	2022-07-08 8:45:08	72.48	67.21	61.03
1191	2022-07-08 9:14:08	74.93	65.37	62.57
1192	2022-07-08 9:43:08	76.63	64.09	63.62
1193	2022-07-08 10:12:08	78.69	62.48	64.84
1194	2022-07-08 10:41:08	80.97	60.45	66.04
1195	2022-07-08 11:10:08	82.71	59.39	67.15
1196	2022-07-08 11:39:08	84.78	58.19	68.49
1197	2022-07-08 12:08:08	86.49	55.84	68.89
1198	2022-07-08 12:37:08	88.13	54.44	69.67
1199	2022-07-08 13:06:08	89.22	51.23	68.89
1200	2022-07-08 13:35:08	89.72	50.24	68.78
1201	2022-07-08 14:04:08	91.13	50.66	70.32
1202	2022-07-08 14:33:08	92.42	47.34	69.51
1203	2022-07-08 15:02:08	92.75	45.55	68.67
1204	2022-07-08 15:31:08	91.96	48.18	69.60
1205	2022-07-08 16:00:08	92.01	46.21	68.43
1206	2022-07-08 16:29:08	90.14	48.65	68.23
1207	2022-07-08 16:58:08	88.89	50.31	68.06
1208	2022-07-08 17:27:08	88.39	50.13	67.50
1209	2022-07-08 17:56:08	87.81	53.60	68.91
1210	2022-07-08 18:25:08	85.03	57.18	68.22
1211	2022-07-08 18:54:08	82.44	60.15	67.27
1212	2022-07-08 19:23:08	80.05	62.02	65.90
1213	2022-07-08 19:52:08	76.94	65.64	64.59
1214	2022-07-08 20:21:08	73.31	67.65	62.00
1215	2022-07-08 20:50:08	70.55	68.73	59.81
1216	2022-07-08 21:19:08	70.82	68.77	60.09
1217	2022-07-08 21:48:08	71.20	68.83	60.48
1218	2022-07-08 22:17:08	71.47	68.52	60.61
1219	2022-07-08 22:46:08	71.13	68.89	60.43
1220	2022-07-08 23:15:08	70.39	69.60	60.02
1221	2022-07-08 23:44:08	69.56	70.03	59.40

1222	2022-07-09 0:13:08	68.58	70.75	58.74
1223	2022-07-09 0:42:08	71.07	68.39	60.17
1224	2022-07-09 1:11:08	71.22	67.37	59.90
1225	2022-07-09 1:40:08	71.32	66.28	59.53
1226	2022-07-09 2:09:08	70.93	66.97	59.46
1227	2022-07-09 2:38:08	70.93	66.77	59.37
1228	2022-07-09 3:07:08	71.45	67.03	59.97
1229	2022-07-09 3:36:08	71.07	67.66	59.87
1230	2022-07-09 4:05:08	71.01	66.79	59.45
1231	2022-07-09 4:34:08	70.76	67.22	59.39
1232	2022-07-09 5:03:08	70.76	66.42	59.06
1233	2022-07-09 5:32:08	70.72	65.96	58.83
1234	2022-07-09 6:01:08	70.64	65.74	58.66
1235	2022-07-09 6:30:08	70.91	65.75	58.92
1236	2022-07-09 6:59:08	70.55	66.74	58.99
1237	2022-07-09 7:28:08	70.26	67.88	59.19
1238	2022-07-09 7:57:08	70.70	68.54	59.88
1239	2022-07-09 8:26:08	73.02	66.06	61.05
1240	2022-07-09 8:55:08	72.67	67.59	61.37
1241	2022-07-09 9:24:08	75.34	64.48	62.57
1242	2022-07-09 9:53:08	76.32	64.85	63.66
1243	2022-07-09 10:22:08	78.46	62.82	64.78
1244	2022-07-09 10:51:08	80.53	61.73	66.23
1245	2022-07-09 11:20:08	82.38	58.98	66.64
1246	2022-07-09 11:49:08	84.54	56.51	67.42
1247	2022-07-09 12:18:08	86.18	55.40	68.37
1248	2022-07-09 12:47:08	87.27	55.21	69.28
1249	2022-07-09 13:16:08	87.96	53.80	69.16
1250	2022-07-09 13:45:08	88.73	51.99	68.88
1251	2022-07-09 14:14:08	90.43	52.33	70.63
1252	2022-07-09 14:43:08	92.00	49.79	70.60
1253	2022-07-09 15:12:08	92.17	49.30	70.47
1254	2022-07-09 15:41:08	91.11	48.87	69.24
1255	2022-07-09 16:10:08	90.59	49.08	68.89
1256	2022-07-09 16:39:08	89.00	51.16	68.65
1257	2022-07-09 17:08:08	88.08	52.29	68.44
1258	2022-07-09 17:37:08	88.46	51.90	68.57
1259	2022-07-09 18:06:08	87.19	54.39	68.77
1260	2022-07-09 18:35:08	84.45	58.26	68.22
1261	2022-07-09 19:04:08	81.90	60.89	67.12
1262	2022-07-09 19:33:08	79.51	63.81	66.22
1263	2022-07-09 20:02:08	76.09	67.55	64.61
1264	2022-07-09 20:31:08	73.40	70.59	63.30
1265	2022-07-09 21:00:08	71.63	72.38	62.31
1266	2022-07-09 21:29:08	70.95	72.72	61.80
1267	2022-07-09 21:58:08	70.97	72.42	61.70
1268	2022-07-09 22:27:08	70.84	71.97	61.39
1269	2022-07-09 22:56:08	71.38	71.89	61.88
1270	2022-07-09 23:25:08	71.18	72.02	61.75
1271	2022-07-09 23:54:08	70.55	72.59	61.36
1272	2022-07-10 0:23:08	69.99	73.36	61.11

1273	2022-07-10 0:52:08	69.14	74.16	60.60
1274	2022-07-10 1:21:08	70.91	71.97	61.46
1275	2022-07-10 1:50:08	71.34	69.94	61.06
1276	2022-07-10 2:19:08	71.18	68.75	60.43
1277	2022-07-10 2:48:08	71.13	69.71	60.77
1278	2022-07-10 3:17:08	71.28	69.77	60.94
1279	2022-07-10 3:46:08	71.36	69.76	61.01
1280	2022-07-10 4:15:08	71.53	69.13	60.92
1281	2022-07-10 4:44:08	71.03	68.74	60.28
1282	2022-07-10 5:13:08	70.88	68.76	60.14
1283	2022-07-10 5:42:08	71.38	68.82	60.64
1284	2022-07-10 6:11:08	71.42	68.30	60.47
1285	2022-07-10 6:40:08	71.90	66.16	60.03
1286	2022-07-10 7:09:08	70.68	68.50	59.85
1287	2022-07-10 7:38:08	70.49	69.43	60.04
1288	2022-07-10 8:07:08	72.32	68.47	61.40
1289	2022-07-10 8:36:08	73.10	68.85	62.30
1290	2022-07-10 9:05:08	73.87	68.73	62.99
1291	2022-07-10 9:34:08	76.88	66.32	64.84
1292	2022-07-10 10:03:08	78.66	64.49	65.72
1293	2022-07-10 10:32:08	80.76	60.78	65.99
1294	2022-07-10 11:01:08	83.17	57.93	66.87
1295	2022-07-10 11:30:08	85.70	55.68	68.07
1296	2022-07-10 11:59:08	87.52	52.92	68.27
1297	2022-07-10 12:28:08	88.87	52.67	69.38
1298	2022-07-10 12:57:08	90.34	52.09	70.41
1299	2022-07-10 13:26:08	91.90	49.94	70.60
1300	2022-07-10 13:55:08	93.29	48.05	70.73
1301	2022-07-10 14:24:08	94.85	45.93	70.82
1302	2022-07-10 14:53:08	96.28	43.59	70.57
1303	2022-07-10 15:22:08	95.84	42.94	69.73
1304	2022-07-10 15:51:08	95.16	42.19	68.61
1305	2022-07-10 16:20:08	93.81	43.66	68.40
1306	2022-07-10 16:49:08	92.88	45.59	68.82
1307	2022-07-10 17:18:08	92.67	45.46	68.55
1308	2022-07-10 17:47:08	91.94	50.10	70.73
1309	2022-07-10 18:16:08	90.22	52.30	70.42
1310	2022-07-10 18:45:08	87.59	56.08	70.04
1311	2022-07-10 19:14:08	85.84	59.37	70.08
1312	2022-07-10 19:43:08	83.62	62.38	69.44
1313	2022-07-10 20:12:08	80.20	66.21	67.94
1314	2022-07-10 20:41:08	78.29	69.11	67.37
1315	2022-07-10 21:10:08	75.82	72.02	66.20
1316	2022-07-10 21:39:08	74.18	73.31	65.13
1317	2022-07-10 22:08:08	73.27	73.06	64.16
1318	2022-07-10 22:37:08	72.32	73.43	63.39
1319	2022-07-10 23:06:08	71.18	72.24	61.83
1320	2022-07-10 23:35:08	70.22	73.08	61.23
1321	2022-07-11 0:04:08	70.80	72.13	61.41
1322	2022-07-11 0:33:08	71.09	72.22	61.73
1323	2022-07-11 1:02:08	71.44	71.85	61.92

1324	2022-07-11 1:31:08	71.51	72.37	62.20
1325	2022-07-11 2:00:08	71.18	73.02	62.13
1326	2022-07-11 2:29:08	71.18	73.15	62.19
1327	2022-07-11 2:58:08	70.99	72.60	61.79
1328	2022-07-11 3:27:08	70.61	72.09	61.21
1329	2022-07-11 3:56:08	70.32	72.26	61.00
1330	2022-07-11 4:25:08	70.01	72.65	60.86
1331	2022-07-11 4:54:08	69.56	73.68	60.83
1332	2022-07-11 5:23:08	69.12	73.85	60.46
1333	2022-07-11 5:52:08	68.62	74.76	60.32
1334	2022-07-11 6:21:08	68.60	75.24	60.49
1335	2022-07-11 6:50:08	70.26	72.77	61.14
1336	2022-07-11 7:19:08	69.43	73.24	60.53
1337	2022-07-11 7:48:08	70.34	71.44	60.70
1338	2022-07-11 8:17:08	72.69	69.00	61.97
1339	2022-07-11 8:46:08	75.08	66.33	63.13
1340	2022-07-11 9:15:08	77.38	65.63	65.01
1341	2022-07-11 9:44:08	79.56	63.97	66.34
1342	2022-07-11 10:13:08	81.15	62.07	66.96
1343	2022-07-11 10:42:08	83.54	59.82	68.14
1344	2022-07-11 11:11:08	85.91	58.03	69.48
1345	2022-07-11 11:40:08	88.33	55.53	70.43
1346	2022-07-11 12:09:08	89.87	54.35	71.23
1347	2022-07-11 12:38:08	91.61	53.88	72.58
1348	2022-07-11 13:07:08	93.17	51.91	72.92
1349	2022-07-11 13:36:08	94.23	51.00	73.36
1350	2022-07-11 14:05:08	95.61	50.55	74.36
1351	2022-07-11 14:34:08	97.59	48.68	75.04
1352	2022-07-11 15:03:08	97.98	46.46	74.00
1353	2022-07-11 15:32:08	96.67	46.92	73.10
1354	2022-07-11 16:01:08	97.30	47.16	73.83
1355	2022-07-11 16:30:08	94.95	47.18	71.71
1356	2022-07-11 16:59:08	93.62	48.92	71.56
1357	2022-07-11 17:28:08	93.37	50.55	72.31
1358	2022-07-11 17:57:08	92.38	52.22	72.37
1359	2022-07-11 18:26:08	89.45	54.56	70.95
1360	2022-07-11 18:55:08	87.21	57.48	70.40
1361	2022-07-11 19:24:08	85.05	58.89	69.10
1362	2022-07-11 19:53:08	81.94	61.70	67.54
1363	2022-07-11 20:22:08	78.87	64.39	65.87
1364	2022-07-11 20:51:08	76.42	65.99	64.25
1365	2022-07-11 21:20:08	74.70	67.54	63.28
1366	2022-07-11 21:49:08	72.94	70.35	62.76
1367	2022-07-11 22:18:08	71.78	71.05	61.93
1368	2022-07-11 22:47:08	70.91	71.31	61.20
1369	2022-07-11 23:16:08	70.99	70.42	60.92
1370	2022-07-11 23:45:08	71.17	71.13	61.37
1371	2022-07-12 0:14:08	70.74	71.31	61.03
1372	2022-07-12 0:43:08	71.40	71.14	61.60
1373	2022-07-12 1:12:08	71.38	71.02	61.53
1374	2022-07-12 1:41:08	70.93	71.80	61.42

1375	2022-07-12 2:10:08	70.22	72.54	61.02
1376	2022-07-12 2:39:08	69.27	73.35	60.42
1377	2022-07-12 3:08:08	68.46	74.68	60.15
1378	2022-07-12 3:37:08	67.81	75.39	59.78
1379	2022-07-12 4:06:08	69.58	77.17	62.15
1380	2022-07-12 4:35:08	71.55	69.47	61.08
1381	2022-07-12 5:04:08	71.47	68.95	60.79
1382	2022-07-12 5:33:08	71.30	68.68	60.51
1383	2022-07-12 6:02:08	71.30	67.91	60.19
1384	2022-07-12 6:31:08	70.82	67.50	59.56
1385	2022-07-12 7:00:08	70.59	67.60	59.39
1386	2022-07-12 7:29:08	70.20	67.88	59.13
1387	2022-07-12 7:58:08	71.36	67.48	60.07
1388	2022-07-12 8:27:08	73.13	65.93	61.11
1389	2022-07-12 8:56:08	73.73	66.77	62.04
1390	2022-07-12 9:25:08	76.34	64.47	63.51
1391	2022-07-12 9:54:08	78.02	63.50	64.67
1392	2022-07-12 10:23:08	80.20	61.48	65.80
1393	2022-07-12 10:52:08	82.27	60.26	67.16
1394	2022-07-12 11:21:08	83.83	58.04	67.54
1395	2022-07-12 11:50:08	85.45	55.47	67.73
1396	2022-07-12 12:19:08	87.30	54.67	69.02
1397	2022-07-12 12:48:08	88.87	54.06	70.14
1398	2022-07-12 13:17:08	89.91	52.59	70.30
1399	2022-07-12 13:46:08	90.91	51.82	70.79
1400	2022-07-12 14:15:08	92.38	49.81	70.97
1401	2022-07-12 14:44:08	94.02	48.06	71.41
1402	2022-07-12 15:13:08	93.85	49.14	71.91
1403	2022-07-12 15:42:08	93.37	50.28	72.15
1404	2022-07-12 16:11:08	93.25	49.80	71.76
1405	2022-07-12 16:40:08	91.80	51.48	71.41
1406	2022-07-12 17:09:08	89.89	49.11	68.27
1407	2022-07-12 17:38:08	89.33	50.62	68.64
1408	2022-07-12 18:07:08	87.38	52.40	67.86
1409	2022-07-12 18:36:08	84.66	59.18	68.88
1410	2022-07-12 19:05:08	82.05	61.52	67.56
1411	2022-07-12 19:34:08	79.08	63.92	65.86
1412	2022-07-12 20:03:08	75.49	67.76	64.13
1413	2022-07-12 20:32:08	72.52	71.06	62.64
1414	2022-07-12 21:01:08	70.32	73.43	61.46
1415	2022-07-12 21:30:08	70.93	73.07	61.91
1416	2022-07-12 21:59:08	71.17	72.08	61.75
1417	2022-07-12 22:28:08	70.84	72.45	61.58
1418	2022-07-12 22:57:08	70.57	71.72	61.03
1419	2022-07-12 23:26:08	70.84	71.66	61.27
1420	2022-07-12 23:55:08	70.32	71.59	60.74
1421	2022-07-13 0:24:08	69.81	72.35	60.56
1422	2022-07-13 0:53:08	69.16	72.52	59.99
1423	2022-07-13 1:22:08	68.62	72.59	59.49
1424	2022-07-13 1:51:08	68.19	72.77	59.16
1425	2022-07-13 2:20:08	67.75	72.95	58.80

1426	2022-07-13 2:49:08	71.28	71.15	61.49
1427	2022-07-13 3:18:08	71.42	67.24	60.03
1428	2022-07-13 3:47:08	71.51	66.99	60.02
1429	2022-07-13 4:16:08	71.22	65.88	59.27
1430	2022-07-13 4:45:08	71.07	66.20	59.26
1431	2022-07-13 5:14:08	70.86	66.68	59.26
1432	2022-07-13 5:43:08	71.51	66.47	59.79
1433	2022-07-13 6:12:08	71.30	67.22	59.91
1434	2022-07-13 6:41:08	72.09	65.67	60.00
1435	2022-07-13 7:10:08	70.70	67.84	59.59
1436	2022-07-13 7:39:08	70.28	68.14	59.31
1437	2022-07-13 8:08:08	71.76	66.72	60.14
1438	2022-07-13 8:37:08	72.40	67.58	61.11
1439	2022-07-13 9:06:08	71.90	69.50	61.42
1440	2022-07-13 9:35:08	74.04	67.84	62.78
1441	2022-07-13 10:04:08	75.28	66.52	63.40
1442	2022-07-13 10:33:08	77.15	64.88	64.46
1443	2022-07-13 11:02:08	79.12	62.59	65.29
1444	2022-07-13 11:31:08	81.03	60.96	66.33
1445	2022-07-13 12:00:08	82.40	60.69	67.49
1446	2022-07-13 12:29:08	83.75	58.09	67.49
1447	2022-07-13 12:58:08	84.56	53.75	65.99
1448	2022-07-13 13:27:08	86.03	55.85	68.47
1449	2022-07-13 13:56:08	86.42	54.32	68.01
1450	2022-07-13 14:25:08	87.96	53.98	69.26
1451	2022-07-13 14:54:08	89.00	52.66	69.50
1452	2022-07-13 15:23:08	88.98	52.01	69.12
1453	2022-07-13 15:52:08	89.16	51.09	68.75
1454	2022-07-13 16:21:08	87.46	52.87	68.19
1455	2022-07-13 16:50:08	86.24	54.13	67.75
1456	2022-07-13 17:19:08	85.70	55.74	68.11
1457	2022-07-13 17:48:08	85.45	55.43	67.71
1458	2022-07-13 18:17:08	83.15	59.63	67.69
1459	2022-07-13 18:46:08	80.66	63.36	67.10
1460	2022-07-13 19:15:08	78.96	65.96	66.66
1461	2022-07-13 19:44:08	76.59	69.32	65.84
1462	2022-07-13 20:13:08	73.56	72.46	64.20
1463	2022-07-13 20:42:08	71.13	74.52	62.66
1464	2022-07-13 21:11:08	70.51	74.86	62.19
1465	2022-07-13 21:40:08	70.55	74.45	62.07
1466	2022-07-13 22:09:08	71.47	72.66	62.27
1467	2022-07-13 22:38:08	70.97	73.19	62.00
1468	2022-07-13 23:07:08	70.10	73.73	61.37
1469	2022-07-13 23:36:08	69.27	74.11	60.71
1470	2022-07-14 0:05:08	71.40	71.91	61.90
1471	2022-07-14 0:34:08	70.97	69.31	60.46
1472	2022-07-14 1:03:08	70.89	69.49	60.46
1473	2022-07-14 1:32:08	71.05	69.23	60.50
1474	2022-07-14 2:01:08	71.28	69.21	60.71
1475	2022-07-14 2:30:08	71.26	69.38	60.76
1476	2022-07-14 2:59:08	71.01	69.31	60.49

1477	2022-07-14 3:28:08	70.95	69.24	60.41
1478	2022-07-14 3:57:08	71.01	68.64	60.22
1479	2022-07-14 4:26:08	70.82	68.25	59.88
1480	2022-07-14 4:55:08	70.86	67.84	59.74
1481	2022-07-14 5:24:08	71.01	66.97	59.53
1482	2022-07-14 5:53:08	71.28	67.80	60.13
1483	2022-07-14 6:22:08	71.26	67.34	59.92
1484	2022-07-14 6:51:08	70.80	66.95	59.31
1485	2022-07-14 7:20:08	70.12	68.23	59.20
1486	2022-07-14 7:49:08	70.51	68.62	59.73
1487	2022-07-14 8:18:08	72.27	67.30	60.86
1488	2022-07-14 8:47:08	71.51	69.68	61.12
1489	2022-07-14 9:16:08	72.67	69.08	61.99
1490	2022-07-14 9:45:08	74.58	67.73	63.25
1491	2022-07-14 10:14:08	77.00	65.19	64.45
1492	2022-07-14 10:43:08	79.60	64.28	66.52
1493	2022-07-14 11:12:08	81.63	61.34	67.08
1494	2022-07-14 11:41:08	83.69	60.22	68.48
1495	2022-07-14 12:10:08	85.53	57.71	68.95
1496	2022-07-14 12:39:08	86.71	56.93	69.65
1497	2022-07-14 13:08:08	89.20	56.10	71.54
1498	2022-07-14 13:37:08	90.78	55.47	72.68
1499	2022-07-14 14:06:08	92.23	51.94	72.06
1500	2022-07-14 14:35:08	93.02	52.01	72.83
1501	2022-07-14 15:04:08	94.06	49.68	72.43
1502	2022-07-14 15:33:08	93.40	51.01	72.61
1503	2022-07-14 16:02:08	93.39	49.61	71.77
1504	2022-07-14 16:31:08	91.44	50.94	70.76
1505	2022-07-14 17:00:08	90.26	52.80	70.73
1506	2022-07-14 17:29:08	90.70	54.23	71.93
1507	2022-07-14 17:58:08	89.58	56.56	72.14
1508	2022-07-14 18:27:08	86.49	59.01	70.51
1509	2022-07-14 18:56:08	83.64	62.03	69.29
1510	2022-07-14 19:25:08	80.47	63.88	67.16
1511	2022-07-14 19:54:08	77.07	66.20	64.97
1512	2022-07-14 20:23:08	73.52	68.67	62.63
1513	2022-07-14 20:52:08	70.80	70.16	60.63
1514	2022-07-14 21:21:08	70.84	69.38	60.36
1515	2022-07-14 21:50:08	70.72	68.72	59.97
1516	2022-07-14 22:19:08	71.44	68.38	60.52
1517	2022-07-14 22:48:08	71.01	68.60	60.20
1518	2022-07-14 23:17:08	70.64	69.15	60.08
1519	2022-07-14 23:46:08	69.95	69.89	59.71
1520	2022-07-15 0:15:08	69.23	70.69	59.35
1521	2022-07-15 0:44:08	68.46	71.96	59.11
1522	2022-07-15 1:13:08	67.75	73.26	58.92
1523	2022-07-15 1:42:08	71.51	71.13	61.71
1524	2022-07-15 2:11:08	71.22	68.17	60.23
1525	2022-07-15 2:40:08	71.15	67.76	59.99
1526	2022-07-15 3:09:08	70.82	67.40	59.52
1527	2022-07-15 3:38:08	71.38	67.20	59.97

1528	2022-07-15 4:07:08	70.88	67.03	59.43
1529	2022-07-15 4:36:08	71.53	65.93	59.58
1530	2022-07-15 5:05:08	70.68	66.09	58.84
1531	2022-07-15 5:34:08	70.84	66.29	59.08
1532	2022-07-15 6:03:08	71.03	65.00	58.71
1533	2022-07-15 6:32:08	70.78	66.02	58.91
1534	2022-07-15 7:01:08	70.61	66.39	58.90
1535	2022-07-15 7:30:08	70.22	66.75	58.68
1536	2022-07-15 7:59:08	70.28	66.92	58.81
1537	2022-07-15 8:28:08	72.42	64.35	59.75
1538	2022-07-15 8:57:08	71.71	67.29	60.32
1539	2022-07-15 9:26:08	73.83	65.67	61.66
1540	2022-07-15 9:55:08	75.70	65.12	63.19
1541	2022-07-15 10:24:08	78.13	62.04	64.11
1542	2022-07-15 10:53:08	80.18	61.14	65.62
1543	2022-07-15 11:22:08	82.30	58.85	66.51
1544	2022-07-15 11:51:08	84.20	58.03	67.87
1545	2022-07-15 12:20:08	86.15	57.68	69.52
1546	2022-07-15 12:49:08	88.15	54.01	69.46
1547	2022-07-15 13:18:08	89.83	55.74	71.94
1548	2022-07-15 13:47:08	91.09	53.37	71.82
1549	2022-07-15 14:16:08	92.71	51.45	72.23
1550	2022-07-15 14:45:08	93.58	50.02	72.19
1551	2022-07-15 15:14:08	93.77	50.91	72.89
1552	2022-07-15 15:43:08	92.54	47.80	69.90
1553	2022-07-15 16:12:08	92.15	48.39	69.91
1554	2022-07-15 16:41:08	90.22	49.77	68.96
1555	2022-07-15 17:10:08	89.23	52.77	69.77
1556	2022-07-15 17:39:08	89.72	50.79	69.10
1557	2022-07-15 18:08:08	87.92	53.68	69.06
1558	2022-07-15 18:37:08	84.85	57.52	68.23
1559	2022-07-15 19:06:08	83.19	61.23	68.49
1560	2022-07-15 19:35:08	81.15	63.88	67.80
1561	2022-07-15 20:04:08	77.00	66.70	65.11
1562	2022-07-15 20:33:08	73.52	69.70	63.06
1563	2022-07-15 21:02:08	71.18	71.63	61.59
1564	2022-07-15 21:31:08	70.49	71.97	61.06
1565	2022-07-15 22:00:08	70.62	71.73	61.09
1566	2022-07-15 22:29:08	70.84	71.86	61.35
1567	2022-07-15 22:58:08	70.91	71.15	61.14
1568	2022-07-15 23:27:08	70.34	71.51	60.73
1569	2022-07-15 23:56:08	69.60	72.13	60.27
1570	2022-07-16 0:25:08	68.96	73.37	60.13
1571	2022-07-16 0:54:08	68.39	74.54	60.02
1572	2022-07-16 1:23:08	67.71	74.98	59.53
1573	2022-07-16 1:52:08	71.69	69.67	61.28
1574	2022-07-16 2:21:08	71.51	68.13	60.49
1575	2022-07-16 2:50:08	71.42	67.32	60.06
1576	2022-07-16 3:19:08	71.47	67.99	60.39
1577	2022-07-16 3:48:08	71.47	67.72	60.28
1578	2022-07-16 4:17:08	71.32	67.76	60.15



1579	2022-07-16 4:46:08	71.03	67.61	59.81
1580	2022-07-16 5:15:08	70.88	67.68	59.69
1581	2022-07-16 5:44:08	71.20	66.89	59.68
1582	2022-07-16 6:13:08	71.13	67.29	59.77
1583	2022-07-16 6:42:08	71.82	65.89	59.84
1584	2022-07-16 7:11:08	70.72	67.93	59.65
1585	2022-07-16 7:40:08	70.55	68.31	59.64
1586	2022-07-16 8:09:08	72.19	67.16	60.73
1587	2022-07-16 8:38:08	72.38	67.62	61.11
1588	2022-07-16 9:07:08	73.02	68.07	61.90
1589	2022-07-16 9:36:08	75.20	66.61	63.36
1590	2022-07-16 10:05:08	77.27	65.25	64.74
1591	2022-07-16 10:34:08	79.78	61.87	65.58
1592	2022-07-16 11:03:08	82.36	60.30	67.27
1593	2022-07-16 11:32:08	84.43	57.36	67.75
1594	2022-07-16 12:01:08	86.13	54.72	67.96
1595	2022-07-16 12:30:08	87.98	53.63	69.09
1596	2022-07-16 12:59:08	89.35	51.49	69.16
1597	2022-07-16 13:28:08	90.43	49.89	69.23
1598	2022-07-16 13:57:08	91.80	49.67	70.36
1599	2022-07-16 14:26:08	93.91	45.94	69.98
1600	2022-07-16 14:55:08	95.16	47.29	71.97
1601	2022-07-16 15:24:08	95.08	47.09	71.77
1602	2022-07-16 15:53:08	95.41	49.35	73.47
1603	2022-07-16 16:22:08	93.89	44.19	68.82
1604	2022-07-16 16:51:08	91.49	44.94	67.15
1605	2022-07-16 17:20:08	91.03	47.52	68.35
1606	2022-07-16 17:49:08	90.41	43.54	65.26
1607	2022-07-16 18:18:08	87.56	45.99	64.25
1608	2022-07-16 18:47:08	84.70	49.50	63.75
1609	2022-07-16 19:16:08	83.19	56.30	66.06
1610	2022-07-16 19:45:08	81.80	60.13	66.66
1611	2022-07-16 20:14:08	79.20	65.06	66.48
1612	2022-07-16 20:43:08	76.47	66.82	64.67
1613	2022-07-16 21:12:08	74.52	69.31	63.86
1614	2022-07-16 21:41:08	73.29	70.20	63.04
1615	2022-07-16 22:10:08	71.69	71.02	61.83
1616	2022-07-16 22:39:08	70.61	71.86	61.12
1617	2022-07-16 23:08:08	70.51	70.82	60.62
1618	2022-07-16 23:37:08	71.07	71.15	61.29
1619	2022-07-17 0:06:08	70.68	71.24	60.95
1620	2022-07-17 0:35:08	71.44	71.01	61.58
1621	2022-07-17 1:04:08	71.13	71.63	61.53
1622	2022-07-17 1:33:08	70.88	72.02	61.45
1623	2022-07-17 2:02:08	70.34	71.72	60.81
1624	2022-07-17 2:31:08	69.56	72.68	60.44
1625	2022-07-17 3:00:08	68.93	73.77	60.25
1626	2022-07-17 3:29:08	68.54	74.28	60.07
1627	2022-07-17 3:58:08	68.02	75.14	59.89
1628	2022-07-17 4:27:08	68.02	78.90	61.26
1629	2022-07-17 4:56:08	71.65	68.61	60.81

1630	2022-07-17 5:25:08	71.51	67.68	60.30
1631	2022-07-17 5:54:08	71.38	68.30	60.43
1632	2022-07-17 6:23:08	70.80	68.42	59.92
1633	2022-07-17 6:52:08	71.09	68.58	60.27
1634	2022-07-17 7:21:08	70.30	69.00	59.68
1635	2022-07-17 7:50:08	71.53	68.67	60.73
1636	2022-07-17 8:19:08	72.63	68.42	61.68
1637	2022-07-17 8:48:08	74.27	68.70	63.36
1638	2022-07-17 9:17:08	76.07	66.85	64.29
1639	2022-07-17 9:46:08	78.44	65.68	66.04
1640	2022-07-17 10:15:08	81.01	62.94	67.24
1641	2022-07-17 10:44:08	83.81	60.45	68.70
1642	2022-07-17 11:13:08	85.66	59.73	70.09
1643	2022-07-17 11:42:08	87.84	57.91	71.22
1644	2022-07-17 12:11:08	89.51	54.81	71.14
1645	2022-07-17 12:40:08	90.64	54.11	71.82
1646	2022-07-17 13:09:08	91.69	52.70	71.99
1647	2022-07-17 13:38:08	92.63	49.59	71.07
1648	2022-07-17 14:07:08	93.10	49.17	71.24
1649	2022-07-17 14:36:08	94.56	46.36	70.84
1650	2022-07-17 15:05:08	95.24	43.89	69.84
1651	2022-07-17 15:34:08	95.03	46.06	71.07
1652	2022-07-17 16:03:08	95.74	45.27	71.20
1653	2022-07-17 16:32:08	93.66	45.06	69.18
1654	2022-07-17 17:01:08	92.34	44.04	67.33
1655	2022-07-17 17:30:08	91.80	47.82	69.24
1656	2022-07-17 17:59:08	90.53	49.88	69.31
1657	2022-07-17 18:28:08	87.69	53.15	68.56
1658	2022-07-17 18:57:08	85.70	55.63	68.04
1659	2022-07-17 19:26:08	83.21	57.73	66.80
1660	2022-07-17 19:55:08	79.56	59.82	64.41
1661	2022-07-17 20:24:08	76.42	63.22	63.03
1662	2022-07-17 20:53:08	73.60	65.39	61.32
1663	2022-07-17 21:22:08	72.09	67.15	60.63
1664	2022-07-17 21:51:08	70.72	68.89	60.04
1665	2022-07-17 22:20:08	70.66	69.71	60.32
1666	2022-07-17 22:49:08	71.18	69.54	60.75
1667	2022-07-17 23:18:08	71.17	69.54	60.74
1668	2022-07-17 23:47:08	71.40	69.35	60.88
1669	2022-07-18 0:16:08	71.42	68.68	60.62
1670	2022-07-18 0:45:08	70.84	68.73	60.09
1671	2022-07-18 1:14:08	70.20	69.67	59.86
1672	2022-07-18 1:43:08	69.70	70.95	59.89
1673	2022-07-18 2:12:08	69.35	71.36	59.72
1674	2022-07-18 2:41:08	68.95	71.67	59.46
1675	2022-07-18 3:10:08	68.60	71.90	59.21
1676	2022-07-18 3:39:08	68.27	71.92	58.90
1677	2022-07-18 4:08:08	67.88	72.10	58.60
1678	2022-07-18 4:37:08	68.85	76.22	61.10
1679	2022-07-18 5:06:08	71.26	68.37	60.35
1680	2022-07-18 5:35:08	71.57	67.46	60.27

1681	2022-07-18 6:04:08	71.11	67.41	59.80
1682	2022-07-18 6:33:08	71.01	67.05	59.56
1683	2022-07-18 7:02:08	70.97	66.79	59.41
1684	2022-07-18 7:31:08	70.45	67.54	59.23
1685	2022-07-18 8:00:08	72.65	65.83	60.61
1686	2022-07-18 8:29:08	73.48	65.82	61.39
1687	2022-07-18 8:58:08	75.24	64.65	62.55
1688	2022-07-18 9:27:08	77.32	63.14	63.85
1689	2022-07-18 9:56:08	79.51	63.23	65.95
1690	2022-07-18 10:25:08	81.80	61.03	67.09
1691	2022-07-18 10:54:08	83.75	60.69	68.76
1692	2022-07-18 11:23:08	85.10	57.83	68.62
1693	2022-07-18 11:52:08	87.92	55.00	69.78
1694	2022-07-18 12:21:08	87.83	54.24	69.28
1695	2022-07-18 12:50:08	89.29	52.47	69.66
1696	2022-07-18 13:19:08	89.70	50.52	68.93
1697	2022-07-18 13:48:08	90.55	48.76	68.66
1698	2022-07-18 14:17:08	91.45	47.53	68.75
1699	2022-07-18 14:46:08	92.81	46.01	69.03
1700	2022-07-18 15:15:08	93.56	45.98	69.68
1701	2022-07-18 15:44:08	92.90	45.82	68.99
1702	2022-07-18 16:13:08	93.29	46.35	69.67
1703	2022-07-18 16:42:08	91.55	47.93	69.08
1704	2022-07-18 17:11:08	90.61	49.46	69.13
1705	2022-07-18 17:40:08	90.22	49.70	68.92
1706	2022-07-18 18:09:08	88.46	51.97	68.61
1707	2022-07-18 18:38:08	85.78	55.48	68.04
1708	2022-07-18 19:07:08	83.15	56.42	66.09
1709	2022-07-18 19:36:08	80.41	58.08	64.36
1710	2022-07-18 20:05:08	76.53	61.11	62.17
1711	2022-07-18 20:34:08	73.91	61.76	60.00
1712	2022-07-18 21:03:08	71.55	63.73	58.65
1713	2022-07-18 21:32:08	71.17	64.41	58.58
1714	2022-07-18 22:01:08	71.15	64.92	58.79
1715	2022-07-18 22:30:08	70.99	66.89	59.48
1716	2022-07-18 22:59:08	71.26	67.36	59.93
1717	2022-07-18 23:28:08	71.20	67.71	60.02
1718	2022-07-18 23:57:08	71.13	68.06	60.09
1719	2022-07-19 0:26:08	70.43	69.08	59.84
1720	2022-07-19 0:55:08	69.81	69.79	59.54
1721	2022-07-19 1:24:08	69.20	70.79	59.35
1722	2022-07-19 1:53:08	68.66	71.64	59.17
1723	2022-07-19 2:22:08	67.96	72.49	58.83
1724	2022-07-19 2:51:08	69.60	74.74	61.27
1725	2022-07-19 3:20:08	71.11	68.32	60.18
1726	2022-07-19 3:49:08	70.78	67.79	59.65
1727	2022-07-19 4:18:08	70.95	66.98	59.48
1728	2022-07-19 4:47:08	71.05	66.34	59.30
1729	2022-07-19 5:16:08	71.55	66.60	59.89
1730	2022-07-19 5:45:08	71.09	66.92	59.58
1731	2022-07-19 6:14:08	71.07	66.58	59.42

1732	2022-07-19 6:43:08	70.78	66.12	58.95
1733	2022-07-19 7:12:08	70.45	66.74	58.90
1734	2022-07-19 7:41:08	70.72	66.74	59.15
1735	2022-07-19 8:10:08	71.36	66.10	59.49
1736	2022-07-19 8:39:08	71.96	66.63	60.28
1737	2022-07-19 9:08:08	73.37	66.44	61.55
1738	2022-07-19 9:37:08	75.51	65.43	63.15
1739	2022-07-19 10:06:08	77.69	61.84	63.60
1740	2022-07-19 10:35:08	80.03	60.06	64.96
1741	2022-07-19 11:04:08	82.00	57.13	65.36
1742	2022-07-19 11:33:08	83.85	56.12	66.58
1743	2022-07-19 12:02:08	85.47	53.62	66.76
1744	2022-07-19 12:31:08	86.92	53.25	67.90
1745	2022-07-19 13:00:08	88.66	52.93	69.33
1746	2022-07-19 13:29:08	90.20	52.41	70.46
1747	2022-07-19 13:58:08	90.90	47.05	67.94
1748	2022-07-19 14:27:08	91.55	46.20	68.01
1749	2022-07-19 14:56:08	91.96	42.61	66.02
1750	2022-07-19 15:25:08	91.17	42.29	65.10
1751	2022-07-19 15:54:08	91.61	44.04	66.67
1752	2022-07-19 16:23:08	90.37	42.11	64.26
1753	2022-07-19 16:52:08	88.66	46.72	65.70
1754	2022-07-19 17:21:08	88.00	49.76	66.92
1755	2022-07-19 17:50:08	88.37	50.66	67.78
1756	2022-07-19 18:19:08	86.45	55.05	68.44
1757	2022-07-19 18:48:08	84.16	56.64	67.13
1758	2022-07-19 19:17:08	81.42	58.27	65.39
1759	2022-07-19 19:46:08	77.67	60.67	63.04
1760	2022-07-19 20:15:08	74.14	64.59	61.48
1761	2022-07-19 20:44:08	71.67	66.94	60.14
1762	2022-07-19 21:13:08	70.55	67.73	59.40
1763	2022-07-19 21:42:08	70.64	67.42	59.36
1764	2022-07-19 22:11:08	71.38	67.06	59.92
1765	2022-07-19 22:40:08	71.03	67.30	59.68
1766	2022-07-19 23:09:08	70.43	67.38	59.14
1767	2022-07-19 23:38:08	69.64	67.99	58.64
1768	2022-07-20 0:07:08	68.83	69.19	58.36
1769	2022-07-20 0:36:08	67.73	70.22	57.72
1770	2022-07-20 1:05:08	68.52	73.36	59.70
1771	2022-07-20 1:34:08	71.38	66.49	59.68
1772	2022-07-20 2:03:08	70.84	64.87	58.47
1773	2022-07-20 2:32:08	71.13	65.14	58.86
1774	2022-07-20 3:01:08	70.80	64.46	58.25
1775	2022-07-20 3:30:08	71.53	63.75	58.64
1776	2022-07-20 3:59:08	70.89	64.58	58.40
1777	2022-07-20 4:28:08	71.32	64.68	58.85
1778	2022-07-20 4:57:08	70.74	63.90	57.96
1779	2022-07-20 5:26:08	70.74	64.46	58.20
1780	2022-07-20 5:55:08	70.95	63.12	57.82
1781	2022-07-20 6:24:08	70.72	63.53	57.78
1782	2022-07-20 6:53:08	71.03	63.33	57.98

1783	2022-07-20 7:22:08	70.34	64.40	57.79
1784	2022-07-20 7:51:08	70.80	64.72	58.37
1785	2022-07-20 8:20:08	71.86	64.05	59.08
1786	2022-07-20 8:49:08	71.90	65.75	59.85
1787	2022-07-20 9:18:08	73.39	65.72	61.26
1788	2022-07-20 9:47:08	75.89	63.34	62.59
1789	2022-07-20 10:16:08	78.67	60.71	64.00

TAB NAME: DAT Table

Action	Days After Treatment (DAT)											
	-96	-68	-54	-28	-21	-1	0	3	7	10	14	28
Coleus Received	X											
Transplant		X										
Apply Beneficials			X									
Infestation				X	X							
Morphometrics						X						X
Precount Evaluation						X						
Evaluation								X	X	X	X	X
Application							X	X	X	X	X	

TAB NAME: Dates

Date	DAT	Action
3/10/2022	-96	Received Coleus
4/7/2022	-68	Transplant
4/21/2022	-54	Beneficials
5/17/2022	-28	Infestation
5/24/2022	-21	Infestation
6/13/2022	-1	Precount
6/14/2022	0	Spray
6/17/2022	3	Evaluation
6/17/2022	3	Spray
6/21/2022	7	Evaluation
6/21/2022	7	Spray
6/24/2022	10	Evaluation
6/24/2022	10	Spray
6/28/2022	14	Evaluation
6/28/2022	14	Spray
7/12/2022	28	Evaluation

(Amblyseius cucumeris & Phytoseiulus Persimilis)

TAB NAME: ProductQuantitiesSpraying

Treatment #	Color	Product	Amount/L	Unit	Adjuvant	Adjuvant Amount/L	Unit	Foliar/Drench	Application					Evaluation						
									DAT 0	DAT 3	DAT 7	DAT 10	DAT 14	DAT 0	DAT 3	DAT 7	DAT 10	DAT 14	DAT 28	
1	Orange	NA	NA	NA				Foliar	X						X	X	X	X	X	X
2	Yellow	Distance	940	uL				Foliar	X						X	X	X	X	X	X
3	Green	ISM-555	300	uL	Capsil	500	uL	Foliar	X			X	X	X	X	X	X	X	X	X
4	Blue	ISM-555	450	uL	Capsil	500	uL	Foliar	X			X	X	X	X	X	X	X	X	X
5	Pink	MBI 203 SC2	10	mL				Foliar	X		X		X	X	X	X	X	X	X	X
6	Green/Orange	MBI 306	780	uL				Foliar	X		X		X	X	X	X	X	X	X	X
7	Blue/Yellow	MBI 306	1.56	mL				Foliar	X		X		X	X	X	X	X	X	X	X
8	Pink/Green	SP3014	1.25	mL	Capsil	500	uL	Foliar	X		X		X	X	X	X	X	X	X	X
9	Orange/Blue	SP3014	2.5	mL	Capsil	500	uL	Foliar	X		X		X	X	X	X	X	X	X	X
10	Yellow/Pink	TetraCURB Max	20	mL				Foliar	X		X		X	X	X	X	X	X	X	X
11	White	V-10433	0.86	mL				Foliar	X	X	X	X	X	X	X	X	X	X	X	X

Date:

DAT	Trtmnt	Color	Product	Amount Per 1L	Unit
0	1	Orange	NA	NA	NA

Date:

DAT	Trtmnt	Color	Product	Amount Per 1L	Unit
0	2	Yellow	Distance	940.00	uL

Date:

DAT	Trtmnt	Color	Product	Amount Per 1L	Unit
			Capsil	500	uL
0	3	Green	ISM-555	300.00	uL

Date:

DAT	Trtmnt	Color	Product	Amount Per 1L	Unit
			Capsil	500	uL
0	4	Blue	ISM-555	450.00	uL

Date:

DAT	Trtmnt	Color	Product	Amount Per 1L	Unit
0	5	Pink	MBI 203 SC2	10.00	mL

Date:

DAT	Trtmnt	Color	Product	Amount Per 1L	Unit
0	6	Green/Orange	MBI 306	780.00	uL

Date:

DAT	Trtmnt	Color	Product	Amount Per 1L	Unit
0	7	Blue/Yellow	MBI 306	1.56	mL

Date:

DAT	Trtmnt	Color	Product	Amount Per 1L	Unit
			Capsil	500	uL
0	8	Pink/Green	SP3014	1.25	mL



Date:

DAT	Trtmnt	Color	Product	Amount Per 1L	Unit
			Capsil	500	uL
0	9	Orange/Blue	SP3014	2.50	mL

Date:

DAT	Trtmnt	Color	Product	Amount Per 1L	Unit
0	10	Yellow/Pink	TetraCurb	20.00	mL

Date:

DAT	Trtmnt	Color	Product	Amount Per 1L	Unit
0	11	White	V-10433	860.00	uL

Date:

DAT	Trtmnt	Color	Product	Amount Per 1L	Unit
3	11	White	V-10433	860.00	uL

Date:

DAT	Trtmnt	Color	Product	Amount Per 1L	Unit
7	5	Pink	MBI 203 SC2	10.00	mL

Date:

DAT	Trtmnt	Color	Product	Amount Per 1L	Unit
7	6	Green/Orange	MBI 306	780.00	uL

Date:

DAT	Trtmnt	Color	Product	Amount Per 1L	Unit
7	7	Blue/Yellow	MBI 306	1.56	mL

Date:

DAT	Trtmnt	Color	Product	Amount Per 1L	Unit
			Capsil	500	uL
7	8	Pink/Green	SP3014	1.25	mL

Date:

DAT	Trtmnt	Color	Product	Amount Per 1L	Unit
			Capsil	500	uL
7	9	Orange/Blue	SP3014	2.50	mL

Date:

DAT	Trtmnt	Color	Product	Amount Per 1L	Unit
7	10	Yellow/Pink	TetraCurb	20.00	mL

Date:

DAT	Trtmnt	Color	Product	Amount Per 1L	Unit
7	11	White	V-10433	860.00	uL

Date:

DAT	Trtmnt	Color	Product	Amount Per 1L	Unit
10	11	White	V-10433	860.00	uL

Date:

DAT	Trtmnt	Color	Product	Amount Per 1L	Unit
			Capsil	500	uL
14	3	Green	ISM-555	300.00	uL

Date:

DAT	Trtmnt	Color	Product	Amount Per 1L	Unit
			Capsil	500	uL
14	4	Blue	ISM-555	450.00	uL

Date:

DAT	Trtmnt	Color	Product	Amount Per 1L	Unit
14	5	Pink	MBI 203 SC2	10.00	mL

Date:

DAT	Trtmnt	Color	Product	Amount Per 1L	Unit
14	6	Green/Orange	MBI 306	780.00	uL

Date:

DAT	Trtmnt	Color	Product	Amount Per 1L	Unit
14	7	Blue/Yellow	MBI 306	1.56	mL

Date:

DAT	Trtmnt	Color	Product	Amount Per 1L	Unit
			Capsil	500	uL
14	8	Pink/Green	SP3014	1.25	mL

Date:

DAT	Trtmnt	Color	Product	Amount Per 1L	Unit
			Capsil	500	uL
14	9	Orange/Blue	SP3014	2.50	mL

Date:

DAT	Trtmnt	Color	Product	Amount Per 1L	Unit
14	10	Yellow/Pink	TetraCurb	20.00	mL

Date:

DAT	Trtmnt	Color	Product	Amount Per 1L	Unit
14	11	White	V-10433	860.00	uL

TAB NAME: ProductQuantitiesDetermination

PR	Product	Treatment	From Protocol		For Experiment/Ordering					COPY DATA TO BELOW	
			Amount Added	Total Amount	Unit	Per 1L	Per 2L	Per 3L	Per 4L		Per 5L
			Pound(s)	Gallon(s)	Pound(s)	0.01	0.03	0.04	0.05	0.07	
			5	100	Gram(s)	5.99	11.98	17.98	23.97	29.96	
			Quart(s)	Gallon(s)	Quart(s)	0.01	0.01	0.02	0.02	0.03	
			2	100	mL(s)	5.00	10.00	15.00	20.00	25.00	
NA	MBI-306	Foliar	Fluid Ounce(es)	Gallon(s)	Fluid Ounce(es)	0.03	0.05	0.08	0.11	0.13	
					mL(s)	0.78	1.56	2.34	3.13	3.91	
			10	100	uL(s)	781.33	1562.67	2344.00	3125.33	3906.66	
			Gallon(s)	Gallon(s)	Quart(s)	0.04	0.08	0.13	0.17	0.21	
			4	100	mL(s)	40.00	80.00	120.00	160.00	200.00	

2	Distance	Foliar	Fluid Ounce(es)	Gallon(s)	Fluid Ounce(es)	0.03	0.06	0.10	0.13	0.16	
					mL(s)	0.94	1.88	2.81	3.75	4.69	
			12	100	uL(s)	937.60	1875.20	2812.80	3750.40	4688.00	
3	ISM-555	Foliar	Fluid Ounce(es)	Gallon(s)	Fluid Ounce(es)	0.01	0.02	0.03	0.04	0.05	
					mL(s)	0.30	0.60	0.90	1.20	1.50	
			3.84	100	uL(s)	300.03	600.06	900.10	1200.13	1500.16	
4	ISM-555	Foliar	Fluid Ounce(es)	Gallon(s)	Fluid Ounce(es)	0.02	0.03	0.05	0.06	0.08	
					mL(s)	0.45	0.90	1.35	1.80	2.25	
			5.76	100	uL(s)	450.05	900.10	1350.14	1800.19	2250.24	
5	MB-203	Foliar	Fluid Ounce(es)	Gallon(s)	Fluid Ounce(es)	0.34	0.68	1.01	1.35	1.69	
					mL(s)	10.00	20.00	30.00	40.00	50.01	
			128	100	uL(s)	10001.06	20002.12	30003.17	40004.23	50005.29	
6	MBI-306	Foliar	Fluid Ounce(es)	Gallon(s)	Fluid Ounce(es)	0.03	0.05	0.08	0.11	0.13	
					mL(s)	0.78	1.56	2.34	3.13	3.91	
			10	100	uL(s)	781.33	1562.67	2344.00	3125.33	3906.66	
7	MBI-306	Foliar	Fluid Ounce(es)	Gallon(s)	Fluid Ounce(es)	0.05	0.11	0.16	0.21	0.26	
					mL(s)	1.56	3.13	4.69	6.25	7.81	
			20	100	uL(s)	1562.67	3125.33	4688.00	6250.66	7813.33	
8	SP3014	Foliar	Fluid Ounce(es)	Gallon(s)	Fluid Ounce(es)	0.04	0.08	0.13	0.17	0.21	
					mL(s)	1.25	2.50	3.75	5.00	6.25	
			16	100	uL(s)	1250.13	2500.26	3750.40	5000.53	6250.66	
9	SP3014	Foliar	Fluid Ounce(es)	Gallon(s)	Fluid Ounce(es)	0.08	0.17	0.25	0.34	0.42	
					mL(s)	2.50	5.00	7.50	10.00	12.50	
			32	100	uL(s)	2500.26	5000.53	7500.79	10001.06	12501.32	
10	etraCURB Ma	Foliar	Fluid Ounce(es)	Gallon(s)	Fluid Ounce(es)	0.68	1.35	2.03	2.71	3.38	
					mL(s)	20.00	40.00	60.01	80.01	100.01	
			256	100	uL(s)	20002.12	40004.23	60006.35	80008.46	100010.58	
11	V-10433	Foliar	Fluid Ounce(es)	Gallon(s)	Fluid Ounce(es)	0.03	0.06	0.09	0.12	0.15	
					mL(s)	0.86	1.72	2.58	3.44	4.30	
			11	100	uL(s)	859.47	1718.93	2578.40	3437.86	4297.33	

TAB NAME: Assignment

Input damage assessment. Input treatment numbers starting from treatment 1 to the final treatment number and repeat until all plants are assigned. For example, if there are 3 treatments, then cell C5 = 1, C6 = 2, C7 = 3, C8 = 1, C9 = 2 etc.

Cage/Plant #	Damage Assessment	Treatment #
1	1	1
2	1	2
3	1	3
4	1	4
5	1	5
6	1	6
7	1	7
8	1	8
9	1	9
10	1	10
11	1	11
12	1	1
13	1	2
14	1	3
15	1	4
16	1	5
17	1	6
18	1	7
19	1	8
20	1	9
21	1	10
22	1	11
23	1	1
24	1	2
25	1	3
26	1	4
27	1	5
28	1	6
29	1	7
30	1	8
31	1	9
32	1	10
33	1	11
34	1	1
35	1	2
36	1	3
37	1	4
38	1	5
39	1	6
40	1	7
41	1	8
42	1	9
43	1	10
44	1	11
45	1	1
46	1	2
47	1	3
48	1	4
49	1	5
50	1	6
51	1	7
52	1	8
53	1	9
54	1	10
55	1	11
56	1	1
57	1	2

Verify each treatment has the same number of replicates

Treatment #	7
Treatment 1	7
Treatment 2	7
Treatment 3	7
Treatment 4	7
Treatment 5	7
Treatment 6	7
Treatment 7	7
Treatment 8	7
Treatment 9	7
Treatment 10	7
Treatment 11	7

Copy damage assessment, Cage/Plant #, and Treatment # from columns A-C. Sort ONLY Damage Assessment and Cage/Plant # (columns H and I) by Damage Assessment (column H)

Damage Assessment	Cage/Plant #	Treatment #
1	1	1
1	2	2
1	5	3
1	6	4
1	7	5
1	8	6
1	12	7
1	13	8
1	15	9
1	16	10
1	17	11
1	19	1
1	21	2
1	22	3
1	23	4
1	24	5
1	25	6
1	26	7
1	30	8
1	32	9
1	36	10
1	38	11
1	44	1
1	47	2
1	49	3
1	55	4
1	56	5
1	59	6
1	60	7
1	61	8
1	64	9
1	68	10
1	70	11
1	72	1
1	73	2
1	75	3
1	77	4
2	3	5
2	4	6
2	9	7
2	10	8
2	11	9
2	14	10
2	18	11
2	20	1
2	27	2
2	29	3
2	31	4
2	33	5
2	34	6
2	35	7
2	37	8
2	39	9
2	40	10
2	42	11
2	43	1
2	45	2

Copy columns H-J to M-O. Then sort each of the damage assessments by column L for columns L-O. For example, if column M rows 6-30 are "1", sort columns L-O rows 6-30 based off column L. Repeat for the appropriate rows for assessments "2" and "3".

Random	Damage Assessment (1-3)	Cage/Plant #	Treatment
2817	1	16	10
5365	1	44	1
3456	1	70	11
7036	1	73	2
1191	1	47	2
20	1	8	6
2722	1	56	5
8824	1	27	2
7878	1	14	10
5192	1	24	5
3106	1	53	8
1360	1	12	7
3415	1	64	9
9317	1	19	1
5333	1	43	1
5679	1	34	6
996	1	48	4
9588	1	57	10
7814	1	61	8
6412	1	5	3
5381	1	30	8
8832	1	51	6
4645	1	38	11
6743	1	9	7
633	1	36	10
3974	1	23	4
2339	1	69	5
6371	1	52	7
2330	1	50	5
2743	1	65	2
8100	1	17	11
3304	1	32	9
258	1	58	11
7189	1	49	3
7991	1	41	9
8046	1	35	7
8618	1	6	4
4561	1	7	5
495	1	40	10
7897	1	13	8
2623	1	2	2
9538	1	76	11
7830	1	59	6
3659	1	42	11
2614	1	55	4
6129	1	18	11
750	1	3	5
6454	1	21	2
9050	1	26	7
7444	1	25	6
3346	1	68	10
4697	1	75	3
4709	1	77	4
1399	1	63	1
9076	1	29	3
2463	1	33	5
6870	1	22	3

Copy L-O and paste values only (right click and paste special then values). This is what will be used.

Plant #	Treatment	Damage Assessment (1-3)
1	1	1
19	1	1
20	1	1
43	1	1
44	1	1
63	1	1
72	1	1
2	2	1
21	2	1
27	2	1
45	2	1
47	2	1
65	2	1
73	2	1
5	3	1
22	3	1
29	3	1
46	3	1
49	3	1
66	3	1
75	3	1
6	4	1
23	4	1
31	4	1
48	4	1
55	4	1
67	4	1
77	4	1
3	5	1
7	5	1
24	5	1
33	5	1
50	5	1
56	5	1
69	5	1
4	6	1
8	6	1
25	6	1
34	6	1
51	6	1
59	6	1
71	6	1
9	7	1
12	7	1
26	7	1
35	7	1
52	7	1
60	7	1
74	7	1
10	8	1
13	8	1
28	8	1
30	8	1
37	8	1
53	8	1
61	8	1
11	9	1

Treatment #	Color	Plant #	Treatment
1	Orange	1	1
2	Yellow	2	2
3	Green	3	5
4	Blue	4	6
5	Pink	5	3
6	Green/Orange	6	4
7	Blue/Yellow	7	5
8	Pink/Green	8	6
9	Orange/Blue	9	7
10	Yellow/Pink	10	8
11	White	11	9
		12	7
		13	8
		14	10
		15	9
		16	10
		17	11
		18	11
		19	1
		20	1
		21	2
		22	3
		23	4
		24	5
		25	6
		26	7
		27	2
		28	8
		29	3
		30	8
		31	4
		32	9
		33	5
		34	6
		35	7
		36	10
		37	8
		38	11
		39	9
		40	10
		41	9
		42	11
		43	1
		44	1
		45	2
		46	3
		47	2
		48	4
		49	3
		50	5
		51	6
		52	7
		53	8
		54	9
		55	4
		56	5
		57	10
		58	11
		59	6
		60	7
		61	8



TAB NAME: HOBOEventData

Plot Title: 21067460 GH 217, IR4

#	Date Time, GMT -0700	Host Connect	EOF
1	2022-06-15 11:43:09	Logged	
2	2022-07-20 10:19:20	Logged	Logged

TAB NAME: HOBODetails

Details

Devices

Device Info

Product	MX2301A
Serial Number	21067460
Firmware Version	100.200
Manufacturer	Onset Computer Corp.
Device Memory	131072
Header Created	2021-05-04 10:46:37 -0700

Deployment Info

Name	21067460 GH 217, IR4
Location	38°32'34" N 121°45'49" W
Group Name	
Deployment Number	6
Wrap Enabled	NO
Configure Time	2022-06-14 10:04:07 -0700
Logging Interval	00 Hr 29 Min 00 Sec
Battery at Launch (V)	3.61

Series: Temp, °F

Series Statistics

Samples	1789
Max	97.98
Min	57.83
Avg	77.00
Std Dev	8.16
First Sample Time	2022-06-14 10:04:08 -0700
Last Sample Time	2022-07-20 10:16:08 -0700

Series: RH, %

Series Statistics

Samples	1789
Max	79.65
Min	37.42
Avg	60.05
Std Dev	8.78
First Sample Time	2022-06-14 10:04:08 -0700
Last Sample Time	2022-07-20 10:16:08 -0700

Series: DewPt, °F

Series Statistics

Samples	1789
Max	75.39
Min	46.25
Avg	61.70
Std Dev	4.81
First Sample Time	2022-06-14 10:04:08 -0700
Last Sample Time	2022-07-20 10:16:08 -0700

Event Type:

Started

Event Type:

Host Connect

Event Type:

EOF